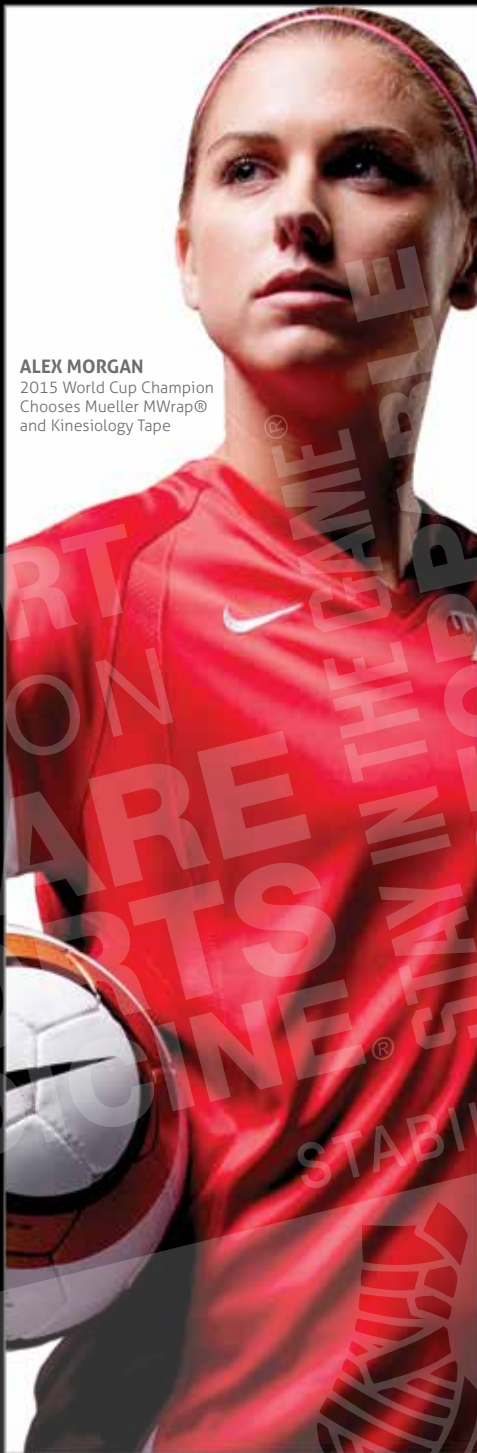




MUELLER[®]
SPORTS MEDICINE

PRODUCT GUIDE



ALEX MORGAN
2015 World Cup Champion
Chooses Mueller MWrap[®]
and Kinesiology Tape



RAFAEL NADAL
14 Time Grand Slam Champion
Chooses Mueller ProStrips[®]

At Mueller, we know the importance of integrity, pride and excellence. These elements are on display in the way we run our business and the products we sell. For more than 50 years, Mueller has been committed to providing the best quality sports medicine products to consumers around the world.

WE ARE SPORTS MEDICINE™





TAPES, WRAPS & TAPING SUPPLY PRODUCTS

4-14



ATHLETIC TRAINER KITS

15-21



COLD/HOT THERAPY PRODUCTS

22-24



SPORTS ACCESSORIES

25-35



ATHLETE PROTECTION PRODUCTS

36-41



ANKLE BRACES & SUPPORTS

42-48



KNEE BRACES & SUPPORTS

49-61



ELBOW BRACES & SUPPORTS

62-67



WRIST BRACES & SUPPORTS

68-71



BACK BRACES & SUPPORTS

72-74



SPECIALTY PRODUCTS

75-81



QUENCH® GUM

82-83

MERCHANDISING MATERIAL

84-85



MTAPE®

The Mueller® M-Tape® is a top-quality athletic tape for all sports medicine applications that is easy to use and provides great support.

Features

- High tensile strength
- Excellent tackiness and conformability
- 100% cotton, zinc oxide athletic tape (team)
- Consistent unwinding to the core
- Colorfast dyes will not bleed

Team

White 130104 1" x 10 yds (48 rolls/cs); 130105 1.5" x 15 yds (32 rolls/cs); 130106 2" x 15 yds (24 rolls/cs)
 Colors 1.5" x 10 yds (32 rolls/cs): 130820 Royal Blue; 130821 Forest Green; 130822 Scarlet; 130823 Gold; 130824 Black; 130825 Orange; 130826 Purple; 130827 Beige; 130828 Maroon; 130829 Gray; 130830 Pink; 130831 Navy

Retail

White 430105 1.5" x 12.5 yds (12/cs)
 Colors (1.5" x 10 yds): 430820 Royal Blue; 430821 Forest Green; 430822 Scarlet; 430823 Gold; 430824 Black; 430825 Orange; 430826 Purple; 430827 Beige; 430828 Maroon; 430829 Gray; 430830 Pink; 430831 Navy
 2-Pack 2 Rolls Shrink Wrapped (1.5" x 15 yds): 28017 white
 2-Pack 2 Rolls Shrink Wrapped (1.5" x 10 yds): 28006 Royal Blue; 28016 Forest Green; 28026 Scarlet; 28036 Gold; 28046 Black; 28056 Orange; 28066 Purple; 28076 Beige; 28086 Maroon; 28096 Gray; 28106 Pink; 28116 Navy
 4-Pack 430607 white 1.5" x 10 yds
 6-Pack 430102 black 1.5" x 10 yds; 430101 white 1.5" x 10 yds



PERFORM™ TAPE

Mueller® Perform™ Tape is a zinc oxide tape.

Features

- 100% cotton backcloth
- Superior adhesion and conformability
- Porous material allows natural air flow and reduce skin irritation

Team

White 130162 1.5" x 15 yds (32 rolls/cs); 130163 2" x 15 yds (24 rolls/cs)



PERFORM PLUS™ TAPE

Mueller® Perform Plus™ Tape is a premium-quality zinc oxide tape.

Features

- 100% cotton backcloth
- Higher thread count for increased strength
- Porous material allows natural air flow and reduce skin irritation

Team

White 130182 1.5" x 15 yds (32 rolls/cs); 130183 2" x 15 yds (24 rolls/cs)



SPATTING TAPE™

Mueller Spatting Tape™ is ideal for spatting shoes to help secure cleats or cover logo.

Features

- Lightweight elastic adhesive tape
- Easy to tear and unwinds to the core
- Conforms easily for superior comfort
- Can also be used as a compression wrap or to fix cold packs in place
- Not made with natural rubber latex

Retail

White	430641 2" x 7.5 yds (12/cs)
Black	430643 2" x 7.5 yds (12/cs)
Pink	430644 2" x 7.5 yds (12/cs)

FLEXLIGHT™ TAPE

Mueller® FlexLight™ tape easily secures cleats, braces and padding and is Spatting Tape compatible.

Features

- Lightweight elastic adhesive tape
- Easy to tear and unwinds to the core
- Conforms easily for superior comfort
- Can also be used as a compression wrap or to fix cold packs in place
- Not made with natural rubber latex

Team

Black	26447 2" x 7.5 yds (24 rolls/cs); 26457 3" x 7.5 yds (16 rolls/cs)
White	26438 2" x 7.5 yds (24 rolls/cs); 26448 3" x 7.5 yds (16 rolls/cs)
Pink	26426 2" x 7.5 yds (24 rolls/cs)



TEAR-LIGHT TAPE®

Mueller® Tear-Light® Tape features a superior adhesive with excellent conformability.

Features

- Easy-to-tear elastic adhesive
- Ideal for securing lateral knee braces, cold packs, or using as a compression wrap

Team

White	130622 2" x 5 yds (24 rolls/cs); 130623 3" x 5 yds (16 rolls/cs); 130626 1.5" x 7.5 yds (32/rolls/cs); 130632 2" x 7.5 yds (24 rolls/cs); 130633 3" x 7.5 yds (16 rolls/cs)
Black	130642 2" x 7.5 yds (24 rolls/cs); 130643 3" x 7.5 yds (16 rolls/cs)
Colors	2" x 7.5 yds (24 rolls/cs); 130681 Red; 130682 Pink; 130683 Green; 130684 Blue; 130685 Gold

TEAR TAPE™

Mueller Tear Tape™ is a durable, high quality elastic tape with adhesive backing.

Features

- Ideal for any application where strapping is required to secure, anchor and protect while maintaining mobility
- Lightweight and easy to tear

Retail

White	430626 1.5" x 7.5 yds (12/cs)
-------	-------------------------------



STRETCH MTAPE® PREMIUM

Mueller® Stretch MTape Premium is maximum-strength elastic adhesive tape.

Features

- Ideal for areas and techniques normally difficult to tape
- Superior adhesive and tensile strength
- Red center guideline helps for consistent taping
- Soft edges won't roll up when putting on athletic equipment

Team

White 130602P 2" x 5 yds (24 rolls/cs); 130603P 3" x 5 yds (16 rolls/cs)

ATHLETIC CARE ATHLETIC TRAINERS' TAPE

Mueller® Athletic Care™ Athletic Trainer Tape is a lightweight non-porous adhesive tape.

Features

- 100% cotton backcloth
- Zinc-oxide tape
- High-tensile strength which provides unmatched support

Team

White 130888 1.5" x 15 yds (32 rolls/cs)



ATHLETIC CARE POROUS TAPE

Mueller® Athletic Care™ Porous Tape is a lightweight porous adhesive tape.

Features

- Porous construction allows for maximum breathability and permits moisture exchange
- 100% cotton backcloth
- Zinc-oxide tape
- High-tensile strength which provides unmatched support

Team

White 130399 1.5" x 15 yds (32 rolls/cs)





SPORT TAPE

Mueller Sport Tape is a versatile tape that can be used for variety of purposes.

Features

- General purpose athletic tape
- Great for use on athletic equipment
- Not made with natural rubber latex

Retail

White 430114 1" x 10 yds (12/cs)
Black 430116 1" x 10 yds (12/cs)

GOLFER'S TAPE

Golfer's Tape is a stretchy, conforming elastic tape that helps protect golfer's fingers.

Features

- Light adhesive does not stick to golf club grips, keeping them free from sticky residue left by traditional athletic tape
- Used by the pros
- Tears easily for custom finger application
- Not made with natural rubber latex

Retail

White 430631 1" x 5 yds (12/cs)



EURO GRIP TAPE

Mueller® Euro Grip Tape is ideal for climbing and other athletic activities.

Features

- Provides firm support and compression
- Enhances grip for handle-related activities
- Long-lasting, extra tacky adhesive
- Serrated edges for easy to tear

Retail

White 25957 1.5" x 12.5 yds (12/cs)

PTAPE™

Mueller® PTape™ is a rigid strapping tape with serrated edges for easy tearing.

Features

- Helps provide support to weak or injured body parts, such as patella taping on a knee
- Tape allows for strong pulling action and anchoring
- Works great with Mueller ProStrips®

Team

Beige 130546 1.5" x 15 yds (30 rolls/cs)

Retail

Beige 430546 1.5" x 15 yds (12/cs)



TAPEWRAP® PREMIUM

The Mueller® TapeWrap® Premium is a cohesive, breathable, lightweight and easy-to-tear tape.

Features

- Ultra-soft fabric that's flexible like a pre-wrap
- High tensile strength
- Won't trap moisture or slip
- Offers more support than pre-wrap
- Great for securing pads, bandages, cold packs and more

Team

White 22057 1" x 6 yds (48 rolls/cs); 24058 2" x 6 yds (24 rolls/cs);
 26059 3" x 6 yds (16 rolls/cs)
 Black 24258 2" x yds (24 rolls/cs); 24259 3" x 6 yds (16 rolls/cs)
 Colors 2" x 6 yds (24 rolls/cs)
 24158 Gray; 24160 Orange; 24358 Beige; 24458 Blue;
 24558 Red; 24658 Pink; 24758 Gold; 24858 Green;
 24958 Purple

MLASTIC® TAPE

Mueller® Mlastic Tape is a lightweight cohesive stretch tape.

Features

- Sticks to itself providing support and compression without sticking to the skin
- Useful for hairy areas of the body or for sensitive skin
- Use as Blood Spill Tape™
- Not made with natural rubber latex

Team

Beige 130612 2" x 5 yds (24 rolls/cs)
 130613 3" x 5 yds (16 rolls/cs)



COHESIVE SPATTING TAPE™

Mueller Cohesive Spatting Tape™ is ideal for wrapping wrists, spatting shoes to help secure cleats, cover logos, or add stability to the ankle.

Features

- Stretching, conforming, elastic cohesive tape
- Easy to tear and unwinds to the core
- Can be used to secure braces and padding
- Lightweight, moisture resistant and easy to tear

Retail

Colors 2" x 6 yds: 430058 White; 430258 Black; 430458 Blue;
 430558 Red; 430658 Pink; 430758 Gold; 439858 Green;
 430958 Purple; 430160 Orange



SOFT SUPPORT WRAP

Soft Support Wrap is hypoallergenic, latex-free and is gentle alternative to adhesive and self-adhering tapes.

Features

- Cohesive tape
- Great for use on sensitive skin
- Easy to apply and easy to remove
- Ideal for protecting against blisters and abrasions
- Not made with natural rubber latex

Retail

Beige 430903 2" x 5 yds; 430904 3" x 5 yds

SPORTS WRAP™

Mueller Sports Wrap™ is made with advanced woven fabric, can be used as an alternative to prewrap, compression wraps, wound care and fixation bandages.

Features

- Cohesive tape
- Doesn't trap moisture so it won't slip
- Tape jobs stay tight for more support
- Won't stick to hair or skin

Retail

White 430613A 3" x 6 yds
Black 26257 3" x 6 yds





Alex Morgan 13

ALEX MORGAN

2015 World Cup Champion
Chooses Mueller MWrap®



MWRAP®

Mueller® MWrap® provides a protective barrier between skin and athletic tape.

Features

- Pre-taping foam underwrap helps protect skin from tape
- Hold pads, socks and cold packs in place
- Use as a protective wrap inside athletic footwear
- Perfect for keeping hair out of your eyes so you can focus on the game
- Not made with natural rubber latex

Team

Natural 130701 2.75" x 30 yds (12 rolls/cs);
130702 2.75" x 30 yds (48 rolls/cs)
Colors 2.75" x 30 yds (48 rolls/cs): 130704 Big Red; 130705 Big Green;
130706 Big Gold; 130707 Big Black; 130708 Big Blue;
130709 Big Orange; 130712 Big Purple; 130713 Big Maroon;
130714 Big Pink; 130715 Big Lime Green; 130721 Big Navy;
130719 Big Aqua; 130722 Big Sunburst

Retail

Colors Single Rolls (2.75" x 21.4 yds): 430702 Gold; 430704 Red;
430705 Green; 430706 Natural; 430707 Black; 430708 Blue;
430709 Orange; 430712 Purple; 430713 Maroon; 430714 Pink;
430715 Sky Blue; 430717 Lime Green; 430718 White;
430719 Aqua; 430721 Navy; 430722 Sunburst
2-Pack (2 rolls shrink wrapped): 27017 Gold; 27027 Red;
27037 Green; 27047 Natural; 27057 Black; 27067 Blue;
27077 Orange; 27087 Purple; 27107 Maroon; 27097 Pink;
27117 Sky Blue; 27127 Lime Green; 27137 White; 27167 Aqua;
27147 Navy; 27157 Sunburst
180631 MWrap® POP clip strip (includes 12 assorted MWrap® colors;
header sign; 2 clip strips; 2 hanging hooks)

STYLING WRAP

Mueller Styling Wrap is the fashion forward solution for teens - both in and out of the game.

Features

- Sporty, flirty fashion in and out of the game!
- Use the super-soft Styling Wrap to make your own fashion statement
- Available in the trendiest colors
- Styling Wrap is the must-have hair accessory for girls
- Braid it, Twist it, Wrap it up
- Not made with natural rubber latex

Retail

Colors 2.75" x 21.4 yds
28047 Pink; 28157 Lime Green; 28217 Green; 28267 Sky Blue;
28347 Aqua; 28367 Orange; 28377 Black; 28437 Red;
28487 Natural; 28527 Blue; 28567 Sunburst; 28597 Purple;
28637 White; 28727 Gold; 28757 Maroon



TAPE KIT

Mueller Tape Kit has what you need for basic taping applications.

Features

- High quality MTape® conforms and provides firm support to your body or on equipment
- MWrap® protects your skin from athletic tape
- MWrap® can also be used to hold pads in place or and as a protective wrap while wearing hiking boots, ski boots, and other footwear

Retail

430125 tape kit (2 rolls tape; 1 roll MWrap®) (12/cs)



TAPING KIT

Mueller Taping Kit is everything you need for most taping applications.

Features

- MTape® features high tensile strength with excellent tackiness and conformability
- MWrap® helps protect your skin from irritation from athletic tape
- Tear-Light® Tape is a lightweight elastic adhesive tape that requires no clips
- Tape cutter makes tape removal safe and easy

Retail

430643 taping kit (3 rolls tape; 1 roll MWrap®; 1 roll Tear Tape™; tape cutter; instructions) (12/cs)



ELASTIC BANDAGE

Mueller® Elastic Bandages are high quality cotton and elastic for compression.

Features

- Washable bandage for repeated uses
- Helps provide firm support and compression for sprains and strains
- Ideal for holding cold packs in place (cover skin before applying cold pack)
- Not made with natural rubber latex

Team

Beige 050101 2" x 5 yds (10 rolls/cs); 050102 3" x 5 yds (10 rolls/cs); 050103 4" x 5 yds (10 rolls/cs); 050104 6" x 5 yds (10 rolls/cs)

Retail

Beige 350101 2" x 5.3'; 350102 3" x 5.3'; 350103 4" x 5.3'; 350104 6" x 5.3' prepack display 20 rolls/tray; 350202 2" x 5.3'; 350203 3" x 5.3'; 350204 4" x 5.3'



WONDER WRAP™

Mueller® Wonder Wrap™ is an elastic and nylon wrap that offers firm, long-term support.

Features

- Maintains elasticity for long-term use
- Recommended to help reduce muscle strain
- Can be used as a barrier to hold a cold pack in place
- More stretch than spandex wraps
- Durable and reusable

Retail

Beige 4590 3" x 2.3' S/M; 4591 3" x 4.5' L/XL



EASYFIT® KINESIOLOGY

Mueller EASYFIT® Kinesiology Pre-Cut Tape comes in unique pre-cut patterns featuring a revolutionary wave pattern design that helps maintain flexibility while improving the body's natural blood circulation to muscles and joints for increased healing.

Features

- Available in 8 pre-cut patterns
- Easy application
- High visibility reflective graphics
- Wearable up to 5 days
- High grade cotton that is breathable, stretchy and maintains flexibility of human skin and muscles
- Helps improve blood flow
- Not made with natural rubber latex

Retail

- 3 Pre-Cut Applications Each:
 23571 Neck; 23572 Arch; 23573 Calf & Ankle;
 23574 Knee; 23575 Waist & Back; 23576 Shoulder
- 6 Pre-Cut Applications Each:
 23577 X Pattern; 23578 Y Pattern

MUELLER KINESIOLOGY TAPE®

Designed to help increase the natural blood flow around the muscle, Mueller® Kinesiology Tape features a revolutionary wave pattern adhesive that moves with the skin and muscles.

Features

- Helps improve circulation and relieve pain
- Advanced taping technique for targeted pain relief
- Maintains flexibility of human skin and muscles
- Water-resistant – can be worn up to 5 days
- Not made with natural rubber latex

Team

- Colors Continuous Rolls (2" x 16.4'):
 27467 Beige; 28147 Black; 28277 Pink; 28367 Blue

Retail

- Colors 20 Pre-Cut I-Strips (2" x 9.75"):
 23817 Black; 23827 Pink; 23837 Blue; 23847 Beige; 23857 Red;
 23867 Orange; 23877 Green; 23887 Yellow; 23897 Sunburst;
 23917 Gray Camo; 23937 Pink Camo; 23947 Green Camo;
 23957 Stars & Stripes



PFTAPE® SYSTEM FOR PLANTAR FASCIITIS

Stay active with instant relief from plantar fasciitis with Mueller® PFTape® System for Plantar Fasciitis.

Features

- Patented breakthrough treatment for heel and arch pain
- One-time use support system designed for rapid heel pain relief
- Easy to apply
- No need to cut or modify
- Fits most men and women's feet

Team

Beige 25337 56-count box

Retail

Beige 26337 7-count pack



BANDAGE SCISSORS

The Mueller® Bandage Scissors feature angled blades with blunt ends so you can quickly and safely remove bandages, tape and more

Team

020301 one scissors



BANDAGE SHEARS

The Mueller® Bandage Shears feature paramedic-grade stainless-steel construction so you can cut through straps, padding, clothing and tape.

Team

020302 one shears



EMERGENCY SHEARS

Mueller® Emergency Shears feature pointed high-carbon steel blades sharp enough to cut through face masks. Soft, molded grips for non-slip security.

Team

020351 one shears



M CUTTER™

The Mueller® M-Cutter Tape Cutter safely slices through stiff athletic-tape wraps. Stainless steel blades snap-in so you can quickly pop in a sharp new blade.

Team

100201 one cutter (12 cutters/cs);
100202 replacement blades
(10 blades/pk; 10 pks/cs)



ECONOMY TAPE CUTTER

Mueller® Economy Tape Cutter gets the job done. Safe and simple to use, this tape cutter makes removing MTape® or other athletic tape easy. Blades can be easily replaced.

Team

200201 one cutter (24 cutters/cs)
200301 replacement blades
(10 blades/pk; 10 pks/cs)



KINESIOLOGY SCISSORS

Mueller® Kinesiology Scissors are ideal for precise cutting of Kinesiology Tape without fraying the edges.

Team

020328 one scissors



TUFFNER® PRE-TAPE SPRAY

Mueller® Tuffner® Pre-Tape Spray is an easy-to-use tape adherent that helps tape and wraps stay in place better, longer.

- Team**
 200901N 4 oz aerosol spray (12/cs)
 200902N 10 oz aerosol spray (12/cs)



TAPE & TUFFNER® REMOVER

Mueller® Tape & Tuffner® Remover removes pre-tape spray and adhesive particles from skin, countertops and taping benches.

- Team**
 200500 4 oz pump citrus spray (12/cs)
 200115 10 oz aerosol citrus spray (12/cs)
 200103 1 qt (12/cs); 200104 1 gallon (1 ea)



M TAC™ NON-AEROSOL PRE-TAPE SPRAY

Mueller® M Tac™ helps MTape® and MWrap® stick better.

Features

- Spray on an even coat before wrapping
- Convenient non-aerosol formula is fast-drying and won't stain

- Team**
 131301N 8 oz pump spray (12/cs)



QUICK DRYING ADHERENT SPRAY

Mueller® Quick Drying Adherent Spray is colorless tape adherent you apply to skin before taping. Get a strong bond that won't irritate your skin.

- Team**
 170201 4 oz aerosol spray (12/cs)
 170202 10 oz aerosol spray (12/cs)



TAPE TOTE™

Mueller® Tape Tote is a lightweight Styrofoam® case to organize and protect your MTape® for fast, easy access.

- Team**
 200351 one tote (sold empty)

MUELLER HERO® ATHLETIC TRAINING KITS

Mueller Hero™ Athletic Trainer kits are customizable with interchangeable accessories. The kits are made with a rugged lightweight nylon exterior with reflective piping for increased visibility in low light. The panels are water-resistant where it is needed the most. A full-open design lets you unzip bags completely for easy packing and unpacking of your gear. The premium zippers, handles and pockets are built to last; and we back these kits with a one year warranty.

Your possibilities are endless with the customizing options of the Mueller Hero™ Athletic Trainer Kits!



MUELLER HERO® SIDEKICK

Overall measurement 10" x 10" x 5"

Team
19977 one bag (sold empty)



MUELLER HERO® RESPONSE

Overall measurement 15" x 10" x 10"

Features

Kit Includes: M2 Clear Pocket 10 x 10 (1 ea)

Team

19119 one bag
(sold with M2 Clear Pocket 10x10)
200119 one bag (ships complete)



MUELLER HERO® SCOUT

Overall measurement 15" x 10" x 3"

Team

19922 one bag (sold empty)



MUELLER HERO® UNSUNG

Overall measurement 10" x 15" x 5"

Features

Kit Includes: L1 Divider 5 x 5 (2 ea); L1 Divider 10 x 5 (2 ea); M2 Mesh Pocket 10 x 10 (1 ea); M1 Clear Folded Pocket (1 ea)

Team

19113 one bag (sold with 2-L1 Divider 5x5;
2 L1 Divider 10x5; M2 Mesh Pocket
10x10; M1 Clear Folded Pocket 10x5)



MUELLER HERO® UTILITY

Overall measurement 10" x 5" x 5"

Features

Kit Includes: M1 Clear Folded Pocket 5 x 10 (1 ea)

Team

19111 one bag



MUELLER HERO® PROTÉGÉ

Overall measurement 10" x 10" x 10"

Features

Kit Includes: M2 Clear Pocket 10 x 10 (1 ea)

Team

19118 one bag
200118 one bag (ships complete)



MUELLER HERO® PERFECT

Overall measurement 20" x 10" x 10"

Features

Kit Includes: L2 Divider 10 x 10 (2 ea); L2 Divider 5 x 10 (2 ea); M2 Mesh Pocket 10 x 10 (2 ea); Tie Down Strap (4 ea); Rain Flyer (1 ea)

Team

19114 one bag



MUELLER HERO® EPIC

Overall measurement 25" x 15" x 10"

Features

Kit Includes: L2 Divider 10 x 10 (2 ea); L2 Divider 15 x 10 (2 ea); M2 Mesh Pocket 10 x 10 (1 ea.); M2 Clear Pocket 10 x 10 (2 ea); Tie Down Strap (4 ea); Rain Flyer (1 ea)

Team

19115 one bag



MUELLER HERO® TITAN

Overall measurement 30" x 15" x 10"

Features

Kit Includes: L2 Divider 10 x 10 (2 ea); L2 Divider 15 x 10 (2 ea); M2 Mesh Pocket 10 x 10 (1 ea); M2 Clear Pocket 10 x 10 (2 ea); Tie Down Strap (4 ea); Rain Flyer (1 ea)

Team

19116 one bag



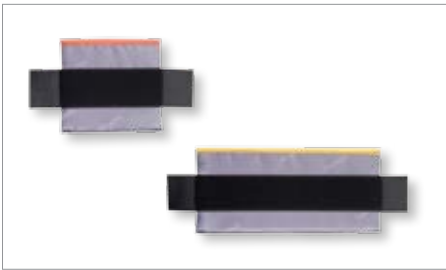
MUELLER HERO® TAPE ROLL

Features

Kit Includes: 1 Tape Roll Holder

Team

19880 one tape roll

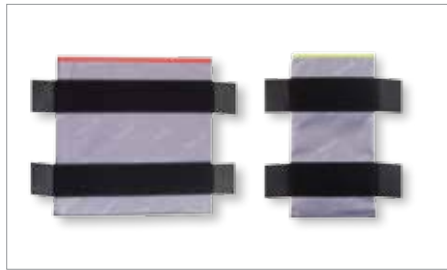


MUELLER HERO® L1-5 DIVIDER KIT

Features

Kit Includes: L1 Divider 5" x 5" (2 ea); L1 Divider 10" x 5" (2 ea)

Team
19551 one kit

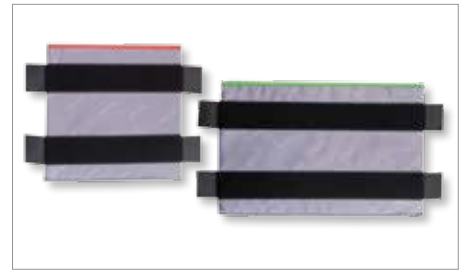


MUELLER HERO® L2-10 DIVIDER KIT

Features

Kit Includes: L2 Divider 10" x 10" (2 ea); L2 Divider 5" x 10" (2 ea)

Team
19552 one kit



MUELLER HERO® L2-10 DIVIDER KIT

Features

Kit Includes: L2 Divider 10" x 10" (2 ea); L2 Divider 15" x 10" (2 ea)

Team
19553 one kit



MUELLER HERO® M1-5 ZIPPER POCKET KIT

Features

Kit Includes: M1 zipper clear Pocket 5" x 5" (2 ea)

Team
19442 one kit



MUELLER HERO® M1-5 ZIPPER POCKET KIT

Features

Kit Includes: M1 zipper clear Pocket 10" x 5" (2 ea)

Team
19443 one kit



MUELLER HERO® M2-10 CLEAR POCKET KIT

Features

Kit Includes: M2 clear pocket 10" x 10" (2 ea)

Team
19773 one kit



MUELLER HERO® M1-5 CLEAR FOLDED POCKET KIT

Features

Kit Includes: M1 Clear Folded Pocket 10" x 5" (2 ea)

Team
19330 one kit



MUELLER HERO® M2-10 MESH POCKET KIT

Features

Kit Includes: M2 Mesh Pocket 10" x 10" (2 ea)

Team
19772 one kit



MUELLER HERO® M2-10 FOLDED CLEAR BANDAGE POCKET

Features

Kit Includes: M2-10 Folded Clear Bandage Pocket 15" x 10" (1 ea)

Team
19220 one kit



MUELLER HERO® M2-10 CARTRIDGE KIT

Features

Kit Includes: M2 Cartridge 10" x 10" (2 ea)

Team
19990 one kit



MUELLER HERO® M1-10 CARTRIDGE KIT

Features

Kit Includes: M1 Cartridge 10" x 5" (2 ea)

Team
19660 one kit



MUELLER HERO® TIE DOWN STRAP KIT

Features

Kit Includes: Tie Down Strap (4 ea)

Team
19010 one kit

MUELLER® HAS MERET™

Mueller has teamed with one of the industry leaders in first aid bags and is honored to offer a premium line of athletic trainers' bags to meet your every need. *Mueller® by MERET™* is built for the professional - professionals that depend on rapidly and proficiently deploying athletic training supplies during crucial moments. Made with the strongest materials, *Mueller® by MERET™* features a smart design and the versatility to modify to your requirements. We listened to your challenges and built *Mueller® by MERET™* with intense attention to detail to deliver the quality, reliability, and functionality you expect when you're called into action. We guarantee the Mueller by Meret products will function for a lifetime under the MERET for Life (M4L) Warranty Policy.

Mueller by Meret™ is build for you, by you.



MEDI KIT™ OMNI

Mueller® Medi Kit™ Omni is built for the professionals that depend on rapidly and proficiently deploying athletic training supplies during crucial moments.

Features

- Comfort-grip carry handles on sides of bag
- Hideaway, adjustable padded yoke backpack strap harness system
- Constructed from incredibly durable, wipe clean black tarpaulin that is water and stain resistant
- TPE lines back and bottom resists water and wear
- Durable bottom skid runners
- Hideaway zippers for optional modules (sold separately)
- Customized internal main compartments SLIDERS™ Divider System
- One view™ technology - all main compartments open completely for full view of contents
- Overall measurement 15" x 22" x 9.5"

Lifetime Warranty

Team
13001 one bag (sold empty)



MEDI KIT™ MULE

The Mueller® Medi Kit™ MULE is the perfect equipment management system for the athletic trainer who wants all the options.

Features

- Comfort-grip carry handles on sides of bag
- Hideaway, adjustable padded yoke backpack strap harness system
- Field tested roller bag with hideaway roller handle
- Constructed from incredibly durable, wipe clean black tarpaulin that is water and stain resistant
- Durable bottom skid runners
- Hideaway zippers for optional modules (sold separately)
- Customized internal main compartments SLIDERS™ Divider System
- One view™ technology - all main compartments open completely for full view of contents
- Overall measurement 14" x 26.5" x 9.5"

Lifetime Warranty

Team
13003 one bag (sold empty)



MEDI KIT™ PRO SPORT BACKPACK

The Mueller® Medi Kit™ Pro Sport Backpack is perfect equipment management system for the athletic trainer who wants a mobile organized solution for their supplies with expansion.

Features

- Comfort-grip carry handles on sides of bag
- Hideaway, adjustable padded yoke backpack strap harness system
- Constructed from incredibly durable, wipe clean black tarpaulin that is water and stain resistant
- Hideaway zippers for optional modules (sold separately)
- Customized internal main compartments SLIDERS™ Divider System
- One view™ technology - all main compartments open completely for full view of contents
- Overall measurement 12.5" x 18" x 9.5

Lifetime Warranty

Team

13004 one bag (sold empty)

MEDI KIT™ FILL PACK MODULE

Add additional storage to your Mueller/Meret Kits™ with the Mueller® Medi Kit™ Fill Pack Module.

Features

- Compact and lightweight
- Holds up to 16 rolls of 2" tape
- Ez-Grab carry handles
- Constructed from incredibly durable, wipe clean black tarpaulin that is water and stain resistant
- Overall measurement 11.5" x 4" x 10"

Lifetime Warranty

Team

13002 one bag (sold empty)



REFILL KIT FOR ATHLETIC TRAINERS' KITS

Restock your Medi Kits™ properly with a Mueller® Refill Kit.

Features

Kit Includes:

- | | |
|-------------------------------------|--|
| 4 - 4" x 4" Gauze Pads | 2 - Mueller KOLD® Instant Cold Pack |
| 10 - 3" x 3" Gauze Pads | 1 - MWrap® roll |
| 12 - M-Strips® Regular | 1 - Tape Tote™ |
| 12 - M-Strips® X-Large | 1 - 3.5 oz. Coolant Cold Spray |
| 12 - M-Strips® Fingertip Bandages | 1 - 4 oz. Tape & Tuffner® Remover Spray |
| 10 - Nasal Plugs | 1 - 3.75 oz. pump bottle Muellergesic® Cream |
| 1 - 3 oz. tube Lubricating Ointment | 10 - 1/32 oz. Triple Antibiotic Ointment |
| 1 - M Cutter™ | 1 - Gauze roll |
| 1 - 2 oz. Germa™ Spray Plus | 1 - 3" Self Adhering Bandage roll |
| 1 - 4 oz. Mueller Hand Sanitizer | 2 - 1 1/2" MTape® roll |
| 1 - 4 oz. Tuffner® Pre-Tape Spray | 1 - Wonder Wrap™ (3" Elastic Wrap) |
| 1 - Elastic Bandage roll | 1 - 1" TapeWrap® roll |
| 1 - Glove Canister | |
| 3 - pair Exam Gloves | |

Kit contents may vary depending on product availability

Team

200750 one refill kit



MEDI KIT™ TREKKER MAX

Mueller® Medi Kit™ Trekker Max has more room so you can carry your gear and keeps it organized when traveling.

Features

- Spacious interior compartments
- Padded shoulder strap
- Constructed of tough, water and winter-resistant material
- Rugged wheels for any terrain
- Retractable handle
- Clear pocket zipper liners
- Removable lid liner
- Removable dividers and elastic loop holders
- Overall measurement 29"L x 13.25"W x 13.25"H

Team

14008 one bag (sold empty)

SLING BAG

Respond to acute on-field injuries with the Mueller® Sling Bag.

Features

- Multiple pockets and mesh pouches to keep your gear organized for quick access
- Adjustable shoulder straps ensures the Sling Bag is comfortable to wear on the sidelines or on the go
- Easy carry handle
- Overall measurement 12"L x 4"W x 14"H

Team

16017 one bag (sold empty)



FIRST AID LEAGUE KIT

The Mueller® First Aid League Kit offers ideal care for any sport at any level.

Features

- Coaching first aid essentials
- Mesh pockets keep everything organized
- Overall measurement 10"L x 2.5"W x 8"H
- Main compartment capacity of 200 cu in

Retail

200725 one kit (ships complete)





FANNY PACK

Keep all of your necessities within reach wearing the Mueller® Fanny Pack.

Features

- Fits comfortably around waist with an adjustable quick-release buckle
- Overall measurement 12" L x 5" W x 4.5" H
- Large main central compartment is 121 cubic inches
- Outer pocket capacity is 24 cubic inches
- Water-resistant nylon construction

Team

200728 one bag (sold empty)



FIRST AID SPORT KIT

Keep all your small essentials in one location with Mueller® First Aid Sport Kit.

Features

- 3" belt loop
- Made of a cordura nylon material
- Overall measurement: 7.5" L x 3" W x 5" H
- Capacity of 112 cu in

Retail

200738 one kit (ships complete)



TAPE ROLL HOLDER

Mueller® Tape Roll Holder is the perfect complement to any athletic trainer's training bag or your med kit to help prevent crushed, bruised or dirty tape.

Features

- Rigid design to protect your tape
- Features a moveable inner divider for customized organization

Team

16137 one tape roll holder (sold empty)



CLEAR ZIPPER BAG

Mueller Clear Zipper Bags provide versatile storage for special items.

Features

- Fits into your athletic trainer kit or sports bag

Team

17058 small 5.5" x 7.5" (sold empty)
17059 large 11" x 7.5" (sold empty)



MUELLERKOLD® INSTANT COLD PACK

The Mueller® Kold® Instant Cold Pack activates instantly for fast response to an injury.

Features

- Squeeze to break ingredients, shake up and apply
- Needs no refrigeration
- Ammonium nitrate free

Team

030102 6" x 9" (12pks/cs)

Retail

330102 6" x 9" instant cold pack
35507 6" x 9" instant cold pack 2-Pack



COLD/HOT PACK, REUSABLE

The Mueller® Reusable Cold/Hot Pack is ideal for cold therapy or heat therapy.

Features

- Soft gel keeps cold in freezer or refrigerator
- Use to help reduce pain or swelling
- Reusable pack

Caution: Wrap or cover cold/hot pack before applying to skin. Consult physician if pain persists. Do not apply directly on skin. Do not use while sleeping.

Team

030104 small 4.75" x 6" (12 pks/cs)
030105 regular 6" x 9" (12 pks/cs)
030109 therapist 12" x 14" (1 ea)

Retail

330104 regular 6" x 9"



BEADED HOT/COLD PACK

Mueller® Beaded Hot/Cold Packs gel beads allow the therapy pack to conform to contours of your body.

Features

- Reusable and soothing
- Can be microwaved for heat therapy
- Store in freezer for cold therapy

Retail

32551 Blue (6 pks/cs - sold only by case)
32561 Pink (6 pks/cs - sold only by case)
6544 12-pack display (6 blue; 6 pink)
32557 Blue (1 ea)



REUSABLE ICE BAG

Mueller® 9" Ice Bag helps relieve pain and swelling.

Features

- Made with high-tech TPU liner
- The unique bag design won't drip or leak
- Wicks away moisture
- Ideal for application of cold therapy in treating minor scrapes, bruises, muscle aches, sprains, and headaches
- Not made with natural rubber latex

Retail

6621A 9" ice bag



FLEXIBLE COLD/HOT THERAPY PADS

Mueller® Flexible Cold/Hot Therapy Pads are a unique product that can be used hot or cold.

Features

- Submerge in water then microwave or freeze
- Therapy Pads can be trimmed to size to accommodate the exact area being treated
- Made of lightweight materials
- Easy to use
- Reusable making them cost-effective

Team

030302 one roll w/dispenser 16" x 28"

Retail

33033 one pad 7.75" x 9.75"



ICE BAGS, SINGLE USE

Mueller® Single Use Ice Bags are quick and easy to use.

Features

- Soft, flexible, and absorbent exterior eliminates the need to wrap ice bag before placing on affected body part
- Simply pop in a few ice cubes, seal, and apply

Retail

33127 4-pack 6" x 10" single use ice bag



DISPOSABLE BAGS & DISPENSER

Mueller® Disposable Plastic Bags for quick cold therapy.

Features

- Quick use for minor sports injuries
- Dispenser is made with heavy duty steel that is coated to resist scuffing

Team

030801 bags 10" x 18" (1,500 bags/roll)
030851 dispenser



ELASTIC COLD/HOT WRAP

Mueller® Elastic Cold/Hot Wrap helps hold cold/hot pack in place.

Features

- Adjustable elastic wrap conforms to all body parts
- Holds cold/hot pack in mesh pouch with secure closure

Retail

330112 one wrap (includes one 6" x 9" cold/hot pack)



COLD/HOT THERAPY WRAP

Mueller® Cold/Hot Therapy Wrap is ideal for the application of cold or hot therapy.

Features

- Adjustable side flaps and detachable extension strap helps secure the therapy wrap in place
- Not made with natural rubber latex

Retail

330121 small (one wrap; two 4.75" x 6" cold/hot packs);
330122 large (one wrap; one 6" x 9" cold/hot packs)



ICE BAG WRAP

Mueller® Ice Bag Wrap is easy to adjust to treat multiple areas.

Features

- Holds Mueller® 9" Ice bag in place
- Bag wicks moisture away so you stay dry

Retail

230676 one wrap
(includes 9" reusable ice bag)



EZ-WRAP™ PLASTIC WRAP

Mueller® EZ-Wrap™ holds cold packs and pads securely in place.

Features

- Easy to use
- Convenient handle lets you to quickly and smoothly wrap cold packs and pads securely into place
- Includes one roll of 4" x 1000' film and handle

Team

050304 EZ-Wrap roll (6 rolls/cs - with handle)



COOLANT COLD SPRAY

The Mueller® Coolant Cold Spray cools skin fast and helps relieve swelling.

Features

- Non-medicated topical spray
- Easy-to-apply solution for pain or swelling

Team

030203 3.5 oz aerosol spray (12/cs)
030202 9 oz aerosol spray (12/cs)

Retail

330202 3.5 oz aerosol spray



GEL BRACE, COLD THERAPY

Mueller Gel Brace provides cold therapy while supporting the ankle.

Features

- Conforming upper air chambers
- Cold therapy lower gel chambers
- Removable gel pads provide cold therapy when placed in freezer or on ice
- Semi-rigid shells made from impact-resistant materials

Support Level: maximum

Retail

White 4556 OSFM



MUELLER KOLD® TOWEL

The Mueller Kold Towel is designed with unique super-evaporating PVA material to help keep you cool.

Features

- Compact, absorbent towel holds onto cold water while remaining seemingly dry to the touch
- Inner mesh grid design to easily conform to the body
- Absorbs moisture and stays cooler than the outside air
- Comes with reusable storage container
- Not made with natural rubber latex

Retail

- 31117 Blue towel 17" x 12"
- 32117 Blue towel 17" x 26"
- 33117 Pink towel 17" x 26"
- 34117 Kiwi towel 17" x 26"
- 180317 Mueller Kold® towel tower display (holds 40 Mueller Kold® towels)





NO GLARE® STEALTH® GLARE-REDUCING STRIPS

- Reflects 86% less light into your eye compared to the competing products
- Features state-of-the-art materials that blast light in different directions away from your eye
- Pressure sensitive material that is easy to use and remove
- Does not smear or sweat off

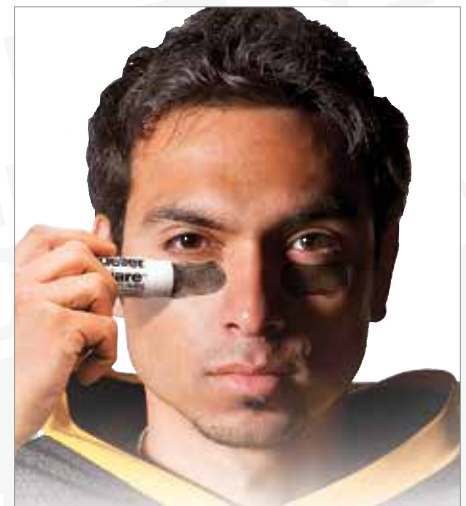
Team
 21147 Stealth® Strips - logo (72 strips/pkg)
 21149 Stealth® Strips - no logo (72 strips/pkg)

NO GLARE® GLARE-REDUCING STRIPS

- The Mueller original glare-reducing strips
- Almost twice as effective as paste
- Pressure sensitive material that is easy to use and remove
- Does not smear or sweat off

Team
 140404A strips - logo (144 strips/pkg)
 81407 strips - no logo (144 strips/pkg)

Retail
 440404A 36 strips - logo (12/cs)
 81607 36 strips - no logo (12/cs)
 81617 36 pink strips - no logo (12/cs)



NO GLARE® PREMIUM GLARE-REDUCING STRIPS

- Fits over the nose for added glare protection
- Almost eight times as effective as paste
- Pressure sensitive material that is easy to use and remove
- Does not smear or sweat off

Team
 140405A strips - logo (36 strips/pkg)
 84057 strips - no logo (36 strips/pkg)

Retail
 82127A 12 strips (24/cs)

NO GLARE® GLARE-REDUCING STRIPS, ASSORTED SHAPES

- The same great performance as the original No Glare® Glare-Reducing Strips
- Now available in stylish, fun shapes
- Almost twice as effective as paste
- Pressure sensitive material that is easy to use and remove
- Does not smear or sweat off

Retail
 440461A 54 assorted shaped strips

NO GLARE® GLARE-REDUCING STICK

- Helps reduce glare on bright days
- Apply black paste to your cheekbone with the easy to apply applicator tube

Team
 140403A .65 oz stick (24/cs)
 140413 .15 oz stick (24/cs)

Retail
 440403A .65 oz stick (12/cs)



FOAM RUBBER

- Open cell foam rubber
- Available with or without an adhesive back

Team

060201 6" x 12" sheets (5/box; 6 boxes/cs)
Adhesive Back:

060251 6" x 2 yd roll 1/8" thick

060252 6" x 2 yd roll 1/4" thick

060271 variety pack 8 - 6" x 12" sheets
(4 - 1/8"; 4 - 1/4")



FELT

- Quality felt ideal for extra cushion or added protection
- Available with or without an adhesive back

Team

060101 9" x 36" sheet 3/8" thick
(1/box; 6 boxes/cs)

Adhesive Back:

060151 6" x 2.5 yd roll 1/8" thick

060152 6" x 2.5 yd roll 1/4" thick

060161 4 - 1/8" thick & 4 - 1/4" thick sheets



DERMAL PADS

- Shock absorber for tender skin areas and bruises
- Reticulated closed cell elastomers
- Pads may be adhered directly to skin with tape, gauze, or elastic bandage

Team

040401 4" square 1/8" thick (12/cs)

040402 4" square 1/2" thick (6/cs)



HEEL & LACE PADS

- Helps reduce friction inside shoes near tender zones of the heel and the area near the laces
- Use these thin layers of white foam with Lubricating Ointment for more comfort

Team

080201 3" x 4" pre-cut pads 3/16" thick
(1,000/cs);

080202 2 rolls 3" x 3" pre-cut pads
1/16" thick - with dispenser (2,000/box)



MORE SKIN™

- Hydro gel wound dressing that provides moisture to help promote healing
- Soothes abrasions and cuts while absorbing wound secretions
- Won't stick to injured area
- Non-medicated and non-sterile

Team

131411 1" squares - foil bag (75/bag)

131412 3" circles - foil bag (25/bag)

131404 12" x 12" sheet



BLISTER PADS

- Thin, flexible, pressure-sensitive adhesive foam pads
- Conforms easily to help protect against the most common causes of blisters, friction and pressure
- Not made with natural rubber latex

Team

20257 1.75" x 2.75" foam pads (25/bag)

Retail

200723 1.75" x 2.75" foam pads (5/pack)



BLISTER KIT

- All the essentials to care for blisters, calluses, abrasions, etc.
- Comes in a convenient take along pack
- Kit includes: 11 foam pressure oval pads; 11 foam pressure donut pads; 1 foam pressure sheet; 6 More Skin™ hydrogel pads; 6 small adhesive mesh; 1 large adhesive mesh
- Not made with natural rubber latex

Retail
200724 blister kit



STICK-ON PADDING KIT

- Adhesive-backed, closed cell, polyethylene foam
- Superior sticking power and good pressure absorption
- Helps protect blisters, corns, calluses, and friction prone areas
- Kit includes: 3" x 5" sheet (16), 3" x 5" sheet w/pre-cut donuts (6), 3" x 5" sheet w/pre-cut ovals (6)
- Not made with natural rubber latex

Team
191001 padding kit



ADHESIVE MESH

- Synthetic fiber with adhesive backing
- Cut to any shape
- Sweat resistant
- Not made with natural rubber latex

Team
010901 6" x 10" sheet (15 sheets/pk)



RAFAEL NADAL
14 time Grand Slam Champion
chooses Mueller ProStrips®



PROSTRIPS®

- Helps protect against turf burns, scrapes, and blisters
- Pressure sensitive mesh strips
- Not made with natural rubber latex

Team
010952 pre-cut 2" x 5" - forehead (qty 24)
010954 pre-cut 4" x 8" - elbow (qty 24)
010962 2" x 10 yd roll
010964 4" x 10 yd roll
010966 6" x 10 yd roll

Retail
410954 pre-cut 4" x 8" - elbow (qty 12)
21962 .5" x 10 yd roll - finger



M STRIPS® ADHESIVE BANDAGES

- Heavyweight and flexible fabric lets air in and moisture out
- Long lasting adhesive won't stick to wound
- Individually wrapped sterile bandages

Team

230407	regular 1" x 3" (100/box)
230607	x-large 2" x 4" (50/box)
260807	fingertip (100/box)



STERILE GAUZE PADS

- 12-ply sterile pads for general first aid
- Individually wrapped and available in multiple sizes

Team

070101	2" x 2" (100/box)
070102	3" x 3" (100/box)
070103	4" x 4" (100/box)



GLOVES AND DISPENSER

- Helps protect your hands from messy clean up
- Available in boxes of latex or latex free gloves
- Dispenser includes six large latex free nitrile gloves (blue)
- Dispenser clips on your belt for easy access

Team

070302	medium latex gloves (100/box)
070303	large latex gloves (100/box)
070312	medium nitrile gloves (100/box)
070313	large nitrile gloves (100/box)
070351	glove dispenser (includes 6 large nitrile gloves)



NASAL SPONGES

- Sponges hydrate and expand to help absorb blood and apply pressure to help stop bleeding
- Individually wrapped and fiber free

Team

191202	5-pack; 191201 25-pack jar
--------	----------------------------



COTTON NASAL PLUGS

- Helps control common nosebleeds occurring in the first inch of the nose
- Made of soft, non-linting, 100% virgin cotton

Team

191221	pack of 300 plugs
--------	-------------------



TONGUE DEPRESSORS

- 6" white birch wood tongue depressors
- Useful for application of ointments

Team

200601	6" long tongue depressors 72-pack (12 pks/cs)
--------	--



COTTON TIPPED APPLICATORS

- 6" sticks tipped with non-sterile cotton

Team

030401 1,000 pack (10 pk/cs)



MAGIC GRIP®

- When applied directly on hands or gloves, it repels water and sweat
- Spray is not sticky or tacky
- Washes off with soap and water
- Legal for use in NCAA and high school play, used by the pros

Team

130201 3 oz aerosol spray (12/cs)

Retail

430201 3 oz aerosol spray (12/cs)



STICKUM SPRAY™

- Aerosol adhesive spray for hands and equipment
- Helps improve grip, even in wet conditions

Team

190701 4 oz aerosol spray (12/cs)

Retail

490701 4 oz aerosol spray (12/cs)



STICKUM™ PASTE

- Designed as a paste to stay on athletes' fingers longer
- Contains resin in a wax base to help improve grip

Team

190801 4 oz jar (12/cs)



STICKUM GRIP™ POWDER

- Contains rosin in convenient powder form
- Fast, non-mess application
- Warmth from hands help activate tackiness

Retail

490751 1.25 oz shaker (12/cs)



BATTERS' BAGS

- Use for dusting bat handles to help improve grip
- Crushed rock resin in porous cloth bags

Team

020401 12 oz bag (12/box)



ROSIN BAGS

- Powdered rosin in handy pocket-sized bags
- Helps improve grip on baseball
- Also known as pitcher's bag

Team
180101 2 oz bags (12/box)



ROSIN BLEND

- Grip improving powder
- Use on hands or soles of your shoes to improve traction
- Can also be used on baseball or softball bat handles

Team
180201A 4 oz shaker (24/cs)
180202A 10 lb drum



ATHLETIC CHALK

- Magnesium carbonate in powdered or solid block form
- Helps reduce friction from contact with equipment

Team
070502 2 oz shaker (24/cs)
070501 8 - 2 oz bars
(1 lb total weight; 12 lbs(96 bars)/cs)

Retail
370502 2 oz shaker (24/cs)



FOOT POWDER

- Helps absorb moisture, keeping your feet dry
- Helps reduce friction

Team
060301N 4 oz shaker (24/cs)
060601N 4 oz aerosol spray (12/cs)



LUBRICATING OINTMENT

- Non-friction ointment that contains lanolin
- Apply to skin to help reduce friction from shoes, pads, equipment, etc.

Team
120201N 3 oz tube (12/cs)
120202N 1 lb jar (12/cs)
120203N 5 lb jar (6/cs)
120204N 25 lb drum



LUBE STICK™ FOR RUNNERS

- Provides barrier between the skin and shoes, pads, equipment, etc.
- Ideal for ball of foot, heel or groin area
- Apply prior to activity

Team
120205N 2.25 oz stick (12/cs)

Retail
420206N .60 oz stick (12/cs)



PETROLEUM JELLY

- Classic lubricant for friction prone areas

Team

160201 1 lb jar (12/cs)
 160202 5 lb jar (6/cs)
 160203 25 lb drum



NUTTIN' BUT NUT

- 100% pure organic virgin coconut oil
- Provides smooth glide
- Refreshing coconut smell

Retail

150900 16 oz jar



MASSAGE LOTION

- Emollient formula provides smooth glide
- Unscented and leaves no greasy feel

Team

130801 16 oz bottle
 130803 1 gallon w/pump top



SPORTS BALM™

- Greaseless analgesic lotion for warming relief
- Contains menthol and methyl salicylate in lotion base
- Temporarily relieves pain from sore muscles, minor sprains or strains

Team

190401N 4 oz bottle
 190402N 16 oz bottle



MUELLERGESIC® CREAM

- Cooling menthol and camphor helps relieve muscle and joint pain
- Has timed-released IcePearls™ for extended relief

Team

31200 3.75 oz pump bottle (12/cs)



HOT STUFF® CREAM

- Warming capsaicin formula delivers comforting, targeted relief
- Has timed-released IcePearls™ for extended relief

Team

30805 3.75 oz pump bottle (12/cs)



ALCOHOL RUB

- 70% isopropyl alcohol for a cooling, refreshing rubdown

Team

010302 1 quart bottle (12/cs)



BALL CLEANER

- Use to clean basketballs and footballs
- Liquid cleaner contains small amount of wax for a buff shine with a dry towel

Team

020201 1 quart bottle (12/cs)



B SHARP™

- Use for cleaning soles of basketball shoes
- Wipe shoes on towel coated with B Sharp™
- 1 quart is enough for an eight game supply
- Washes out of towel in regular laundry

Team

020101 1 quart bottle (12/cs)



GLOVE OIL LIQUID

- Handy applicator bottle
- Helps soften baseball gloves and helps protect from moisture
- Made with 100% natural oils

Team

370351 2 oz applicator bottle (12/c)



PINE TAR

- Helps improve grip and feel
- Apply this sticky black liquid to bat handles with a rag
- Can be applied to aluminum or wood, baseball or softball bats

Team

160602 16 oz bottle (12/cs)

Retail

160601 4 oz bottle (12/cs)



VITAMIN C DIETARY SUPPLEMENT

- Chewable lemon flavored tablets
- 100 mg of Vitamin C per tablet

Team

220201 300 count (12/cs)

200202 1,000 count (6/cs)



SHOWER SOAP

- Hard-milled body and face soap
- Long lasting bars, great lather, and rinses clean
- Contains vegetable oil and glycerin

Team
190503 3 oz bars (50/cs)



GERMA SPRAY™ PLUS WITH LIDOCAINE

- Antiseptic spray with Lidocaine
- Helps prevent infection in minor cuts, scrapes and burns
- Handy, take-along, non-aerosol spray

Team
33014 2 oz pump spray (24/cs)



SUPER SUDS™ FOAMING ANTISEPTIC HAND SANITIZER

- Foaming antiseptic hand sanitizer kills 99.99% of germs
- Alcohol-free
- Softens hands with each use
- Doesn't contain Triclosan

Team
34007 8 fl oz foaming antiseptic hand sanitizer



SUDS™ FOAM SOAP

- Convenient waterless foam soap
- Helps clean your hands

Team
190504N 4 oz aerosol spray (12/cs)



INSTANT HAND SANITIZER

- Antiseptic gel that kills 99.9% of germs without the use of water
- Contains Vitamin E and aloe

Team
046004 4 oz flip top bottle (24/cs)



SANI-CLOTH® PLUS

- Pre-moistened germicidal wipes
- Contains powerful disinfectant to kill germs on surfaces
- Tuberculocidal, bactericidal and virucidal including HIV

Team
190102 160 cloths/canister (12/cs)



EZ-CLEANS PLUS KIT

- Kit Includes
- 1- Pair of Vinyl Gloves
 - 1- Odor Mask
 - 1- Pouch Red Z® Solidifier 10g
 - 1- Scoop/Scraper
 - 1- SaniZidePlus® Germicidal Wipe (8" x 8")
 - 1- Red bio-hazard Waste Bag (24" x 24")
 - 1- White Disposal Bag (30" x 36")
 - 2- Twist Ties
 - 1- p.a.w.s.® Antimicrobial Hand Wipes (5" x 8")
- Instructions

Team
30733 1 kit (12/cs)

WATER BOY

- 10 gallon water cooler includes long lasting rechargeable battery
- Four no mess, sanitary "easy flow" dispenser valves
- Compact stainless steel frame

Battery charger sold separately

Team
230510 10 gallon unit w/rechargeable battery
230515 dual-rate battery charger
230520 replacement battery



WHIZZER® CLEANER & DISINFECTANT

- Cleaner & disinfectant - cleaner, fungicide, mildewstat, virucide, and deodorizer all in one
- Effective against 2009 H1N1 flu virus, 2013 Influenza A Virus (H7N9), also kills HIV-1, Hepatitis B & C, and other viruses
- Effective against a broad spectrum of bacteria (inc. Methicillin - Resistant Staph Aureus {MRSA}) and fungus germs on contact
- Cleans and disinfects all non-porous athletic equipment - Dilute product as directed, apply directly to floors, walls, training tables, locker rooms, showers, or hard non-porous surfaces
- Helps prevent spread of boils and athlete's foot
- EPA registered
- One ounce of concentrate makes one gallon of full strength disinfectant (dilute product for use)

Team
230201 1 gallon - 2 FREE pint sprayers included w/each gallon (6/cs)





QUART WATER BOTTLE

- New design with easier grip
- Holds 1 quart of liquid
- Made of heavyweight, long-lasting BPA free plastic
- Available in a sure shot or straw design

Bulk

Natural w/White Straw Cap: 919129M red logo; 919129MB black logo

Natural w/Sureshot Squeeze Cap: 919339M red cap & logo; 919369MB black cap & logo



QUART WATER BOTTLE CARRIER

- Collapsible design
- Heavy-duty plastic for durability

Team

919000 red (holds 6 quart bottles)

919111 black (holds 6 quart bottles)



QUART WATER BOTTLE, WIDE MOUTH

- Holds 1 quart of liquid
- Wide mouth opening makes it easier to add ice
- Made of heavyweight, long-lasting BPA free plastic
- Available in a push-pull or straw lid

Customized private label bottles available, call 800-356-9522 for details

Team

Straw Lid: 020625 red (qty 1); 020538 red (qty 32); 020621 natural (qty 1); 020544 natural (qty 32);
020623 white (qty 1); 020550 white (qty 32); 020627 pink (qty 1)

Push-Pull Lid: 020626 red (qty 1); 020540 red (qty 32); 020622 natural (qty 1); 020543 natural (qty 32);
020624 white (qty 1); 020551 white (qty 32); 020629 pink (qty 1)



QUART WATER BOTTLE CARRIER

- Heavy-duty steel
- Plastic coating prevents rust
- Convenient fold down handle

Team

020503 red (holds 6 wide mouth quart bottles)



DIAMOND PAD 3 PAD SHIRT

Mueller® Diamond Pad 3 Pad Shirt is designed with high impact diamond padding technology.

Features

- Helps protect your ribs and tailbone from shocks and bumps during contact sports
- Provides constant compression and soothing warmth
- Lightweight and comfortable fabric is designed to stretch and contour for use as multi-purpose protection
- Rapid moisture management fabric allows for moisture and air to exchange through the garment
- Antimicrobial treatment helps control odors*
- Made with latex free materials

*The antimicrobial treatment is intended to protect the garment against odor, staining and deterioration caused by bacteria and microorganisms. This treatment does not extend protection to the skin.

Retail

Black 60910 youth regular; 60911 youth large; 60901 small; 60902 medium; 60903 large; 60904 x-large; 60905 xx-large

sizing: measure around your chest

YTH-REG	YTH-LG	ADULT-SM	ADULT-MD	ADULT-LG	ADULT-XL	ADULT-XXL
26" - 29"	29" - 33"	34" - 36"	36" - 40"	40" - 44"	44" - 48"	48" - 52"
66 - 73 cm	73 - 83 cm	86 - 91 cm	91 - 101 cm	101 - 111 cm	111 - 121 cm	121 - 132 cm

DIAMOND PAD 5 PAD SHORT

Mueller® Diamond Pad 5 Pad Short is designed with high impact diamond padding technology.

Features

- Protects your thighs, hips and lower spine from shocks and bumps during contact sports
- Provides constant compression and soothing warmth
- Lightweight and comfortable fabric is designed to stretch and contour for use as multi-purpose protection
- Rapid moisture management fabric allows for moisture and air to exchange through the garment
- Antimicrobial treatment helps control odors*
- Made with latex free materials

*The antimicrobial treatment is intended to protect the garment against odor, staining and deterioration caused by bacteria and microorganisms. This treatment does not extend protection to the skin.

Retail

Black 50910 youth regular; 50911 youth large; 50901 small; 50902 medium; 50903 large; 50904 x-large; 50905 xx-large

sizing: measure around your waist

YTH-REG	YTH-LG	ADULT-SM	ADULT-MD	ADULT-LG	ADULT-XL	ADULT-XXL
18" - 22"	22" - 26"	26" - 30"	30" - 34"	34" - 38"	38" - 42"	42" - 46"
45 - 55 cm	55 - 66 cm	66 - 76 cm	76 - 86 cm	86 - 96 cm	96 - 106 cm	106 - 116 cm



FLEX SHIELD® FLEXIBLE PROTECTIVE CUP

Mueller Flex Shield® are designed with comfort in mind.

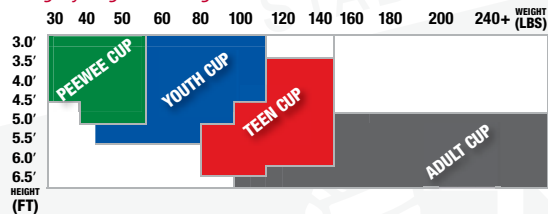
Features

- Superior cooling ventilation
- Cup bends for flexible protection
- Cup with soft edges for comfort

Retail

- Pee Wee 56210 green
- Youth 56211 blue
- Teen 56202 red
- Adult 56203 gray

sizing: by height and weight



FLEX SHIELD® W/SUPPORT SHORTS

Mueller® Flex Shield and Support Shorts provide protection and support.

Features

- Brief/Shorts with breathable panels
- Hip/Leg double material helps area from abrasion
- Comfortable tagless waist band
- Moisture management fabric
- Superior cooling ventilation
- Cup bends for flexible protection
- Cup with soft edges for comfort

Retail

- Pee Wee 58210 pee wee regular; 58211 pee wee large; 58310 youth regular
- Youth 58311 youth large
- Teen 58410 teen regular; 58411 teen large
- Adult 58511 adult small; 58512 adult medium; 58513 adult large; 58514 adult x-large; 58515 adult xx-large

sizing: measure around your waist

PEE WEE-REG	PEE WEE-LG	YTH-REG	YTH-LG	TEEN-REG	TEEN-LG
18" - 21"	21" - 24"	22" - 26"	26" - 30"	26" - 30"	30" - 34"
46 - 53 cm	53 - 60 cm	55 - 66 cm	66 - 76 cm	66 - 76 cm	76 - 86 cm

ADULT-SM	ADULT-MD	ADULT-LG	ADULT-XL	ADULT-XXL
26" - 30"	30" - 34"	34" - 38"	38" - 42"	42" - 48"
66 - 76 cm	76 - 86 cm	86 - 96 cm	96 - 106 cm	106 - 121 cm



FLEX SHIELD® W/SUPPORTER

Mueller® Flex Shield and Supporter provide protection and support.

Features

- Breathable moisture managed support pouch
- 1.75" inch comfortable waist band
- Wide elastic leg bands for maximum mobility
- Superior cooling ventilation
- Cup bends for flexible protection
- Cup with soft edges for comfort

Retail

Youth 59410 youth regular; 59411 youth large
 Teen 59421 teen small; 59422 teen medium
 Adult 59401 adult small; 59402 adult medium; 59403 adult large;
 59404 adult x-large; 59405 adult xx-large

sizing: measure around your waist

YTH-REG	YTH-LG	TEEN-SM	TEEN-MD	ADULT-SM	ADULT-MD	ADULT-LG	ADULT-XL
20" - 24"	24" - 28"	28" - 32"	32" - 38"	28" - 32"	32" - 38"	38" - 44"	44" - 50"
50 - 60 cm	60 - 71 cm	71 - 81 cm	81 - 96 cm	71 - 81 cm	81 - 96 cm	96 - 111 cm	111 - 127 cm

SUPPORT SHORTS

Mueller® Support Shorts provide comfortable support with breathable panels.

Features

- Comfortable tagless waist band
- Moisture management fabric
- Hip/Leg double material helps reduce abrasion
- Not made with natural rubber latex

Retail

Youth 54910 youth regular; 54911 youth large
 Adult 55701 adult small; 55702 adult medium; 55703 adult large;
 55704 adult x-large; 55705 adult xx-large

sizing: measure around your waist

YTH-REG	YTH-LG	ADULT-SM	ADULT-MD	ADULT-LG	ADULT-XL	ADULT-XXL
22" - 26"	26" - 30"	26" - 30"	30" - 34"	34" - 38"	38" - 42"	42" - 48"
55 - 66 cm	66 - 76 cm	66 - 76 cm	76 - 86 cm	86 - 96 cm	96 - 106 cm	106 - 121 cm



ATHLETIC SUPPORTER

Mueller Athletic Supporter is made of breathable moisture managed materials.

Features

- Breathable moisture managed support pouch
- 1.75" comfortable waist band
- Wide leg bands for maximum mobility

Retail

White 51001 adult small; 51002 adult medium; 51003 adult large;
 51004 adult x-large

sizing: measure around your waist

ADULT-SM	ADULT-MD	ADULT-LG	ADULT-XL
28" - 32"	32" - 38"	38" - 44"	44" - 50"
71 - 81 cm	81 - 96 cm	96 - 111 cm	111 - 127 cm





MUELLER®

MATRIX®

MOUTHGUARDS



MUELLER MATRIX® MOUTHGUARDS GIVE YOU FULL TEETH COVERAGE COMPARED TO CONVENTIONAL MOUTHGUARDS

OPTIMAL IMPACT PROTECTION
ULTIMATE CUSTOM FIT

MUELLER MATRIX® MOUTHGUARDS

Mueller Matrix® Mouthguard is the world's most advanced self-fit mouthguard.

Features

- Lightweight impact absorbing materials
- Oprofin™ technology allows for an unmatched comfortable secure fit
- Open front palate allowing for superior speech and breathing
- Specialized composite construction
- Air cushion barrier for increased protection

Retail

- Basic 86210 youth Black; 86207 adult Black
- Moderate 85410 youth Royal/White; 84407 adult Royal/White; 85310 youth Red/White; 84307 adult Red/White; 85210 youth Black/White; 84207 adult Black/White; 84507 adult Pink/White
- Advanced 83207 adult Black/Pearl; 83107 adult Gel/Pearl
- Maximum 81007 adult Back/White/Gel; 81107 adult Fangs
- Braces 82007 adult Black



**STRAPGUARD™**

Designed by a dentist, Strapguard® Mouthguard helps reduce the risk of dental injury during the toughest of sports with a strap to hold secure to your facemask.

Features

- Easily attaches to face mask with durable strap
- Thin front wall construction won't interfere with speech or breathing
- Posterior area helps absorb impact
- Fast-fitting co-polymer resin for comfortable fit
- Perfect fit gives better blunt-blow protection
- Low profile helps reduce gagging
- Recommended for persons age 13 and older
- BPA Free
- Not made with natural rubber latex

Team

Colors (100/cs; 120 cs/pallet): 131007 Clear; 131013 Gold; 131015 Red; 131016 Kelly Green; 131017 Royal Blue; 131018 Black; 131031 Navy Blue; 131032 White; 131033 Maroon; 131034 Purple; 131035 Orange; 131036 Forest Green; 131037 Pink

**MUELLERGUARD™**

Designed by a dentist, Muellerguard® Mouthguard helps reduce the risk of dental injury during the toughest of sports.

Features

- Thin front wall construction won't interfere with speech or breathing
- Posterior area helps absorb impact
- Fast-fitting co-polymer resin for comfortable fit
- Perfect fit gives better blunt-blow protection
- Low profile helps reduce gagging
- Recommended for persons age 13 and older
- BPA Free
- Not made with natural rubber latex

Team

Colors (100/cs; 120 cs/pallet): 131005 Clear; 131024 Kelly Green; 131025 Red; 131027 Royal Blue; 131028 Black; 131029 Gold; 131041 Navy Blue; 131042 White; 131043 Maroon; 131044 Purple; 131045 Orange; 131046 Forest Green; 131047 Pink

**LIP & MOUTHGUARD**

Mueller® Lip & Mouthguard helps provide protection to your mouth during contact sports.

Features

- Allows full breathing and wearing comfort
- Made with latex free materials

Retail

Black 431019 OSFM (12/cs)

**YOUTH MOUTHGUARDS**

Mueller Youth Mouthguards are designed to help protect youths' mouth during contact sports.

Features

- Shock-absorbing pillow
- Low profile helps reduce gagging
- BPA Free
- Not made with natural rubber latex

Team

Black 131020 youth with strap (100/cs; 120 cs/pallet); 131030 youth without strap (100/cs; 120 cs/pallet)



NOSE GUARD

Mueller Nose Guard is made of high-impact protective plastic.

Features

- Ideal for sports where helmet is not required: basketball, wrestling, baseball, karate, etc.
- Rigid plastic and soft padding with adjustable strap

Team

140501 Nose Guard

Retail

440501 Nose Guard

MUELLER COLLAR™

The Mueller Collar™ offers superior neck protection for Linemen, Linebackers and Power Running Backs.

Features

- Does not trap heat like conventional collars
- Bolted to the shoulder pad so it will not shift and float around
- Closer to the helmet than conventional collars

Team

Colors Collar: 320301 Black; 320302 Navy Blue; 320303 Royal Blue; 320304 Red; 320305 Maroon; 320306 Green; 320307 Purple; 320308 Gold; 320309 Orange

Retail

Colors Collar: 420301 Black; 420302 Navy Blue; 420303 Royal Blue; 420304 Red; 420305 Maroon; 420306 Green; 420307 Purple; 420308 Gold; 420309 Orange
Cover Only: 320311 Black; 320312 Navy Blue; 320313 Royal Blue; 320314 Red; 320315 Maroon; 320316 Green; 320317 Purple; 320318 Gold; 320319 Orange





Hg80® PREMIUM SOFT ANKLE BRACE WITH STRAPS

The Hg80® Premium Soft Ankle Brace is made with improved Mueller exclusive HydraCinn® fabric is a high-performance, moisture-wicking material with an anti-microbial barrier.*

Features

- Stirrup straps help provide exceptional heel-lock support
- Dynamic stretching criss-cross figure 8 straps add tension and support as your ankle moves to help prevent against ankle sprains
- New and improved lightweight materials with reflective binding
- Not made with natural rubber latex

Support Level: maximum

**The antimicrobial treatment is intended to protect the brace against odor, staining and deterioration caused by bacteria and microorganisms. This treatment does not extend protection to the skin.*

Retail

Black 49710 x-small; 49711 small; 49712 medium; 49713 large; 49714 x-large; 49715 xx-large

sizing: according to shoe size

	XS	SM	MD	LG	XL	XXL
US MEN	6 - 7	7 - 9	9 - 11	11 - 13	13 - 15	15 - 17
US WOMEN	7 - 8	8 - 10	10 - 12	12 - 14	14 - 16	16 - 18

THE ONE® ANKLE BRACE

Designed to be extremely light and low-profile, The One® Ankle Brace is comfortable to wear in shoes or cleats during competition. Protects against inversion and eversion ankle sprains.

Features

- Adjustable criss-crossing straps simulate 'figure 8' taping structure
- Helps protect against inversion and eversion ankle sprains
- Top elastic straps lock down all of the straps to provide a clean finish
- Side stirrup straps imitate the effects of taping
- Not made with natural rubber latex

Support Level: maximum

Team

Black 41110 x-small; 41111 small; 41112 medium; 41113 large; 41114 x-large; 41115 xx-large; 41116 xxx-large
 White 42220 x-small; 42221 small; 42222 medium; 42223 large; 42224 x-large; 42225 xx-large; 42226 xxx-large

Retail

Black 46640 x-small; 46641 small; 46642 medium; 46643 large; 46644 x-large
 White 45530 x-small; 45531 small; 45532 medium; 45533 large; 45534 x-large

sizing: according to shoe size

	XS	SM	MD	LG	XL	XXL	XXXL
US MEN	6 - 7	7 - 9	9 - 11	11 - 13	13 - 15	15 - 17	17 - 19
US WOMEN	7 - 8	8 - 10	10 - 12	12 - 14	14 - 16	16 - 18	18 - 20



SOFT ANKLE BRACE WITH STRAPS

Mueller® Soft Ankle Brace with Straps is designed to conform to your ankle without the expense or hassle of taping

Features

- Non-stretch criss-cross straps imitate the effects of taping
- Secured stirrup straps provide support and are easy to apply
- Antimicrobial treatment helps control odors.*
- Not made with natural rubber latex

Support Level: advanced

*The antimicrobial treatment is intended to protect the brace against odor, staining and deterioration caused by bacteria and microorganisms. This treatment does not extend protection to the skin.

Team

Black 42770 x-small; 42771 small; 42772 medium; 42773 large; 42774 x-large

Retail

Black 41770 x-small; 41771 small; 41772 medium; 41773 large; 41774 x-large

sizing: according to shoe size

	XS	SM	MD	LG	XL
US MEN	6-7	7-9	9-11	11-13	13-15
US WOMEN	7-8	8-10	10-12	12-14	14-16

ATF@2 ANKLE BRACE

The patented ATF@2 Ankle straps self-adjust to support your Anterior Talofibular Ligament and help protect against 'rolling the ankle' without restricting jumping, speed or agility.

Features

- Bi-directional back elastic for supportive, unrestricted motion
- Single layer of fabric over the ankle bone helps provide more comfort
- Rigid plastic stays help support both sides of your ankle
- Not made with natural rubber latex

Support Level: advanced

Team

Black 43330B x-small; 43331B small; 43332B medium; 43333B large; 43334B x-large

White 43365B xx-large

Retail

Black 43330 x-small; 43331 small; 43332 medium; 43333 large; 43334 x-large; 43335 xx-large

White 43360 x-small; 43361 small; 43362 medium; 43363 large; 43364 x-large; 43365 xx-large

sizing: according to shoe size

	XS	SM	MD	LG	XL	XXL
US MEN	6-7	7-9	9-11	11-13	13-15	15-17
US WOMEN	7-8	8-10	10-12	12-14	14-16	16-18



XLP ANKLE BRACE

Mueller® XLP Ankle Brace has a high cut front with a narrow low profile bottom for more feel and more movement.

Features

- Elastic rear panel for supportive unrestricted motion
- Single layer of fabric over the ankle bone helps provide more comfort
- Rigid plastic stays help support both sides of your ankle
- Antimicrobial treatment helps control odors.*
- Not made with natural rubber latex

Support Level: maximum

*The antimicrobial treatment is intended to protect the brace against odor, staining and deterioration caused by bacteria and microorganisms. This treatment does not extend protection to the skin.

Team

Black 43012B xx-small; 43025B xx-large
White 43212B xx-small

Retail

Black 43000 x-small; 43001 small; 43002 medium; 43003 large; 43004 x-large
White 43100 x-small; 43101 small; 43102 medium; 43103 large; 43104 x-large

sizing: according to shoe size

	XXS	XS	SM	MD	LG	XL	XXL
US MEN	4 - 5	6 - 7	7 - 9	9 - 11	11 - 13	13 - 15	15 - 17
US WOMEN	5 - 6	7 - 8	8 - 10	10 - 12	12 - 14	14 - 16	16 - 18

ADJUST-TO-FIT® ANKLE BRACE

Adjust-to-Fit® Ankle Brace help ensure you always have a snug fit with patented adjustable side panels to help control compression.

Features

- Steel springs help support both sides of the ankle
- Soft, pliable vinyl conforms to your foot for lightweight, comfortable, all-day wear
- Inner nylon tricot/foam lining for additional comfort
- Durable reinforced eyelets withstand repeated attaching and reattaching of side panels
- Removable side panels for quick and easy custom fit sizing

Support Level: advanced

Retail

Black 4571 OSFM
White 4577 OSFM

sizing: according to shoe size

ONE SIZE	
US MEN 5 - 16	US WOMEN 6.5 - 17.5



ADJUSTABLE ANKLE STABILIZER

Mueller® Adjustable Ankle Stabilizer offers helpful support for weak ankles, sprained ankles and/or arthritic ankles.

Features

- Criss-cross straps simulate taping and provide adjustable tension & support
- Top and bottom sectional design minimizes slippage and bunching
- Rigid plastic stays help support both sides of your ankle

Support Level: advanced

Retail

Black 44547 OSFM

sizing: according to shoe size

ONE SIZE	US WOMEN'S 4.5 TO US MEN'S 13
----------	-------------------------------

ADJUSTABLE ANKLE SUPPORT

The Adjustable Ankle Support patented strapping system gives you all-day comfort and support.

Features

- Seamless edges provide extra comfort and help prevent skin irritation
- Patented criss-cross straps simulate taping and provides adjustable tension & support
- Soft neoprene blend retains your body heat for soothing warmth
- Top and bottom sectional design minimize slippage and bunching
- Antimicrobial treatment helps control odors.*

Support Level: moderate

*The antimicrobial treatment is intended to protect the brace against odor, staining and deterioration caused by bacteria and microorganisms. This treatment does not extend protection to the skin.

Retail

Black 4547 OSFM

sizing: according to shoe size

ONE SIZE	US WOMEN'S 6 TO US MEN'S 13
----------	-----------------------------



MUELLER GREEN ADJUSTABLE ANKLE SUPPORT

Mueller® Green Adjustable Ankle Support patented strapping system provides firm and even ankle support.

Features

- Made of a soft, lightweight fabric that is comfortable for all day wear
- Adjustable tension straps for custom fit
- Seamless design helps prevent irritation
- Open heel for a snug, comfortable fit
- Made from recycled materials*
- Antimicrobial treatment helps control odors**
- Not made with natural rubber latex

Support Level: moderate

*Mueller® Green Products: Created from material made without the use of petroleum. The green inner lining is manufactured with 67% recycled plastic PET bottles. The spandex binding is made from 73% recycled materials. Even the packaging is printed with soy-base inks and 100% recyclable.

**The antimicrobial treatment is intended to protect the brace against odor, staining and deterioration caused by bacteria and microorganisms. This treatment does not extend protection to the skin.

Retail

Black 86511 OSFM

sizing: according to shoe size

ONE SIZE	
US MEN 4.5 - 12	US WOMEN 6 - 14



ANKLE SUPPORT WITH STRAPS

Mueller® Ankle Support with Straps provides non-restricting support with compression and soothing warmth.

Features

- Criss-cross straps simulate taping and provide adjustable tension & support
- Neoprene blend retains body heat to help promote healing and flexibility.

Support Level: moderate

Retail

Black 965SM small; 965MD medium; 965LG large; 965XL x-large

sizing: according to shoe size

	SM	MD	LG	XL
US MEN	7 - 9	9 - 11	11 - 13	13 - 15
US WOMEN	8 - 10	10 - 12	12 - 14	14 - 16

WRAPAROUND ANKLE SUPPORT

Mueller® Wraparound Ankle Support provides soothing warmth and flexibility.

Features

- Criss-cross straps simulate taping and provide adjustable tension & support
- Neoprene blend retains body heat to help promote healing and flexibility
- Wraparound design for easy on and off

Support Level: basic

Retail

Black 4541 OSFM

sizing: according to shoe size

ONE SIZE US WOMEN'S 8 TO US MEN'S 17



NEOPRENE ANKLE SUPPORT

Mueller® Neoprene-blend Ankle Support features soothing warmth, light compression, and non-restricting ankle support.

Features

- Seamless edges
- Body heat-retaining neoprene blend

Support Level: moderate

Retail

Black 964SM small; 964MD medium; 964LG large; 964XL x-large

sizing: according to shoe size

	SM	MD	LG	XL
US MEN	7 - 9	9 - 11	11 - 13	13 - 15
US WOMEN	8 - 10	10 - 12	12 - 14	14 - 16



HG80® ANKLE SUPPORT

Hg80® Ankle Support is designed with a lightweight performance materials to enhance all phases of activity (warm-up, high intensity, and cool down therapy).

Features

- Gel pads help provide compression and support for weak or sore ankles
- Antimicrobial treatment helps control odors.*
- Not made with natural rubber latex

Support Level: moderate

**The antimicrobial treatment is intended to protect the brace against odor, staining and deterioration caused by bacteria and microorganisms. This treatment does not extend protection to the skin.*

Retail

Black 49910 x-small; 49911 small; 49912 medium; 49913 large; 49914 x-large

sizing: measure around ankle

XS	SM	MD	LG	XL
8" - 10"	10" - 12"	12" - 14"	14" - 16"	16" - 18"
20 - 25 cm	25 - 30 cm	30 - 35 cm	35 - 40 cm	40 - 45 cm

LIFE CARE® ANKLE SUPPORT

Life Care® Ankle Support is designed with a lightweight materials that conform to comfortably fit both men and women.

Features

- Gel pads help provide compression and support for weak or sore ankles
- Designed for all day comfort
- Antimicrobial treatment helps control odors.*
- Not made with natural rubber latex

Support Level: moderate

**The antimicrobial treatment is intended to protect the brace against odor, staining and deterioration caused by bacteria and microorganisms. This treatment does not extend protection to the skin.*

Retail

Plum 40991 small; 40992 medium; 40993 large; 40994 x-large
Taupe 47011 small; 47012 medium; 47013 large; 47014 x-large

sizing: measure around ankle

SM	MD	LG	XL
10" - 12"	12" - 14"	14" - 16"	16" - 18"
25.4 - 30.5 cm	30.5 - 35.5 cm	35.5 - 40.6 cm	40.6 - 45.7 cm



ELASTIC ANKLE SUPPORT

Mueller® Elastic Ankle Support features a lightweight elastic knit that provides firm support yet still allows your ankle a full range of movement.

Features

- Custom top weave helps prevent rolling
- Reinforced trimmed edges improve durability
- Contour design helps prevent slippage and bunching

Support Level: basic

Retail

Black 47631 small; 47632 medium; 47633 large; 47634 x-large

sizing: according to shoe size

	SM	MD	LG	XL
US MEN	7 - 9	9 - 11	11 - 13	13 - 15
US WOMEN	8 - 10	10 - 12	12 - 14	14 - 16



HG80® PREMIUM HARD SHELL ANKLE BRACE

The Hg80® Premium Hard Shell Ankle Brace is made with improved Mueller exclusive HydraCinn® fabric is a high-performance, moisture-wicking material with an anti-microbial barrier.*

Features

- Formed plastic shell with soft rubber edges for comfortable rigid ankle support
- Straps are fully adjustable to lock brace in position
- Step-in design helps increase comfort and control while making it easy to put on
- Antimicrobial treatment helps control odors*
- Not made with natural rubber latex

Support Level: maximum

*The antimicrobial treatment is intended to protect the brace against odor, staining and deterioration caused by bacteria and microorganisms. This treatment does not extend protection to the skin.

Retail

Black Left: 49011 small; 49012 medium; 49013 large; 49014 x-large
Right: 49021 small; 49022 medium; 49023 large; 49024 x-large

sizing: according to shoe size

	SM	MD	LG	XL
US MEN	7 - 9	9 - 11	11 - 13	13 - 15
US WOMEN	8 - 10	10 - 12	12 - 14	14 - 16



LITE™ ANKLE BRACE

The Mueller® Lite™ Ankle Brace offers advanced support after an ankle injury to help you get back into the game.

Features

- Padded, semi-rigid shells help protect against inversion and eversion sprains
- One strap with hook and loop fasteners makes on-and-off fast and easy
- Hinged pivot points allow ankle flexibility and full mobility

Support Level: advanced

Retail

Black 4552 OSFM
White 4554 OSFM

sizing: according to shoe size

ONE SIZE US WOMEN'S 8 TO US MEN'S 17



GEL BRACE, COLD THERAPY

Mueller Gel Brace provides cold therapy while supporting the ankle.

Features

- Conforming upper air chambers
- Cold therapy lower gel chambers
- Removable gel pads provide cold therapy when placed in freezer or on ice
- Semi-rigid shells made from impact-resistant materials

Support Level: maximum

Retail

White 4556 OSFM



AIRCASST® SPORT ANKLE BRACE

Aircast® Sport Ankle Brace offers maximum support after an ankle injury to help you get back into the game.

Features

- Dual straps let you adjust evenly for a secure fit
- Padded, semi-rigid shells help protect against inversion and eversion sprains
- Pre-inflated aircell cushions that contour to your ankle

Support Level: maximum

Aircast® is a registered trademark of DJO, LLC Vista, CA

Retail

White Left: 4561 OSFM
Right: 4566 OSFM

sizing: according to shoe size

ONE SIZE US WOMEN'S 6 TO US MEN'S 18



HG80® PREMIUM HINGED KNEE BRACE

Mueller® Hg80® Premium Hinged Knee Brace is made with improved Mueller exclusive HydraCinn® fabric is a high-performance, moisture-wicking material with an anti-microbial barrier.*

Features

- Patented Triaxial Hinge tracks the knee motion and allows maximum mobility
- New and improved lightweight materials with reflective binding
- Upper strapping locks brace in position
- Upper bidirectional stretch material is form fitting and fully adjustable
- Comfortable breathable stretch panel behind the center of the knee
- Not made with natural rubber latex

Support Level: maximum

**The antimicrobial treatment is intended to protect the brace against odor, staining and deterioration caused by bacteria and microorganisms. This treatment does not extend protection to the skin.*

Team

Black 59015B xx-large

Retail

Black 59011 small; 59012 medium; 59013 large; 59014 x-large

sizing: measure around knee

SM	MD	LG	XL	XXL
12" - 14"	14" - 16"	16" - 18"	18" - 20"	20" - 22"
30 - 35 cm	35 - 40 cm	40 - 45 cm	45 - 50 cm	50 - 55 cm

HG80® HINGED KNEE BRACE

The Hg80® Hinged Knee Brace is the ultimate brace for weak or injured knees, as well as for protection after injury.

Features

- Patented Triaxial Hinge tracks the knee motion and allows maximum mobility
- Upper and lower strapping locks brace in position
- Tibial Containment System features a custom secondary shell with patella buttress and rear support strap
- High-performance moisture-wicking Mueller HydraCinn® fabric
- Antimicrobial treatment help control odors*
- Not made with natural rubber latex

Support Level: maximum

**The antimicrobial treatment is intended to protect the brace against odor, staining and deterioration caused by bacteria and microorganisms. This treatment does not extend protection to the skin.*

Team

Black 54015B xx-large

Retail

Black 54011 small; 54012 medium; 54013 large; 54014 x-large

sizing: measure around knee

SM	MD	LG	XL	XXL
12" - 14"	14" - 16"	16" - 18"	18" - 20"	20" - 22"
30 - 35 cm	35 - 40 cm	40 - 45 cm	45 - 50 cm	50 - 55 cm



PRO LEVEL™ HINGED KNEE BRACE DELUXE

The high-performance, heavy-duty Mueller® Pro Level™ Hinged Knee Brace offers maximum medial-lateral support to weak or injured knees.

Features

- Patented Triaxial Hinge tracks the knee motion and allows maximum mobility
- Adjustable top and bottom straps provide controlled compression and a custom fit
- Patella buttress helps stabilize and protect your kneecap
- Open back helps reduce bunching with sectional design for easy on/off
- Removable patella buttress can be cut to desired shape for proper tracking and positioning around kneecap
- Includes a lockout hinge option for complete immobilization and adjustable extension stops at 10°, 20°, and 30°

Support Level: maximum

Team

Black B5333SM small; B5333XXXL xxx-large

Retail

Black 5333MD medium; 5333LG large; 5333XL x-large; 5333XXL xx-large

sizing: measure around thigh & calf

	SM	MD	LG	XL	XXL	XXXL
THIGH	17" - 18" (43 - 45 cm)	19" - 20" (48 - 50 cm)	21" - 22" (53 - 55 cm)	23" - 24" (58 - 60 cm)	25" - 26" (63 - 66 cm)	27" - 28" (68 - 71 cm)
CALF	13" - 14" (33 - 35 cm)	14" - 15" (35 - 38 cm)	15" - 16" (38 - 40 cm)	16" - 17" (40 - 43 cm)	17" - 18" (43 - 45 cm)	18" - 19" (45 - 48 cm)

HINGED KNEE BRACE

Mueller® Hinged Knee Brace offers maximum medial-lateral support without restricting your mobility.

Features

- Patented Triaxial Hinge tracks the knee motion and allows maximum mobility
- Closed behind your knee
- Open patella and removable patella buttress help stabilize and protect your kneecap
- Fitted sleeve with a slip-on design

Support Level: maximum

Retail

Black 2333SM small; 2333MD medium; 2333LG large; 2333XL x-large; 2333XXL xx-large

sizing: measure around knee

SM	MD	LG	XL	XXL
12" - 14" 30 - 35 cm	14" - 16" 35 - 40 cm	16" - 18" 40 - 45 cm	18" - 20" 45 - 50 cm	20" - 22" 50 - 55 cm



HINGED WRAPAROUND KNEE BRACE

Mueller® Hinged Wraparound Knee Brace offers maximum medial-lateral support without restricting your mobility.

Features

- Patented Triaxial Hinge tracks the knee motion and allows maximum mobility
- Open behind your knee
- Open patella and removable patella buttress help stabilize and protect your kneecap
- Sectional design and adjustable straps provide controlled compression and a custom fit
- Antimicrobial treatment controls or eliminates odors*

Support Level: maximum

*The antimicrobial treatment is intended to protect the brace against odor, staining and deterioration caused by bacteria and microorganisms. This treatment does not extend protection to the skin.

Retail

Black 3333REG regular; 3333LG large; 3333XL x-large

sizing: measure around knee

REG	LG	XL
12" - 16"	16" - 20"	20" - 24"
30 - 40 cm	40 - 50 cm	50 - 60 cm

MUELLERHINGE™ 2100 KNEE BRACE

The Muellerhinge™ 2100 Knee Brace features Mueller's largest 12-inch triaxial hinge to properly track the knee joint and produce near-normal motion.

Features

- Patented Triaxial Hinge tracks the knee motion and allows maximum mobility
- Designed to help protect the knee from lateral blows
- Secondary compression wraps help hold the upper and lower cuffs in place

Support Level: maximum

Team

Black B2100 OSFM

sizing: measure around knee

ONE SIZE	10" - 26" (25 - 66 cm)
-----------------	------------------------



MUELLER GREEN ADJUSTABLE HINGED KNEE BRACE

Mueller® Green Adjustable Hinged Knee Brace criss-crossing elastic straps above and below your knee provide self-adjusting knee support.

Features

- Metal hinges help protect knee from hyperextension
- Side-hinge pockets to adjust the hinge location for your knee size
- Open patella helps stabilize knee cap
- Open back eliminates uncomfortable bunching
- Made from recycled materials**
- Antimicrobial treatment helps control odors**
- Not made with natural rubber latex

Support Level: maximum

**Mueller® Green Products: Created from material made without the use of petroleum. The green inner lining is manufactured with 67% recycled plastic PET bottles. The spandex binding is made from 73% recycled materials. Even the packaging is printed with soy-base inks and 100% recyclable.

**The antimicrobial treatment is intended to protect the brace against odor, staining and deterioration caused by bacteria and microorganisms. This treatment does not extend protection to the skin.

Retail

Black 86455 OSFM

sizing: measure 3" above knee

ONE SIZE	13" - 21" (33 - 53 cm)
-----------------	------------------------



HG80® PREMIUM KNEE BRACE

Mueller® Hg80® Premium Knee Brace is made with improved Mueller exclusive HydraCinn® fabric is a high-performance, moisture-wicking material with an anti-microbial barrier.*

Features

- Supportive steel springs support both sides of the knee
- New and improved lightweight materials with reflective binding
- Upper strapping locks brace in position
- Upper bidirectional stretch material is form fitting and fully adjustable
- Comfortable breathable stretch panel behind the center of the knee
- Not made with natural rubber latex

Support Level: advanced

*The antimicrobial treatment is intended to protect the brace against odor, staining and deterioration caused by bacteria and microorganisms. This treatment does not extend protection to the skin.

Team

Black 59115B xx-large

Retail

Black 59111 small; 59112 medium; 59113 large; 59114 x-large

sizing: measure around knee

SM	MD	LG	XL	XXL
12" - 14"	14" - 16"	16" - 18"	18" - 20"	20" - 22"
30 - 35 cm	35 - 40 cm	40 - 45 cm	45 - 50 cm	50 - 55 cm

HG80® PREMIUM KNEE STABILIZER

Mueller® Hg80® Premium Knee Stabilizer is made with improved Mueller exclusive HydraCinn® fabric is a high-performance, moisture-wicking material with an anti-microbial barrier.*

Features

- Supportive steel springs support both sides of the knee
- New and improved lightweight materials with reflective binding
- Comfortable breathable stretch panel behind the center of the knee
- Not made with natural rubber latex

Support Level: advanced

*The antimicrobial treatment is intended to protect the brace against odor, staining and deterioration caused by bacteria and microorganisms. This treatment does not extend protection to the skin.

Team

Black 59215B xx-large

Retail

Black 59211 small; 59212 medium; 59213 large; 59214 x-large

sizing: measure around knee

SM	MD	LG	XL	XXL
12" - 14"	14" - 16"	16" - 18"	18" - 20"	20" - 22"
30 - 35 cm	35 - 40 cm	40 - 45 cm	45 - 50 cm	50 - 55 cm



HG80® KNEE BRACE

The Mueller-exclusive HydraCinn® fabric is a high-performance fabric wicks moisture away from your knee, helping prevent irritation.

Features

- Supportive steel springs support both sides of the knee
- Extreme comfort and exceptional support
- Upper and lower strapping locks brace in position
- Tibial Containment System features a custom fit secondary shell with patella buttress and rear support strap
- Antimicrobial treatment help control odors*
- Not made with natural rubber latex

Support Level: advanced

*The antimicrobial treatment is intended to protect the brace against odor, staining and deterioration caused by bacteria and microorganisms. This treatment does not extend protection to the skin.

Team

Black 54115B xx-large

Retail

Black 54111 small; 54112 medium; 54113 large; 54114 x-large

sizing: measure around knee

SM	MD	LG	XL	XXL
12" - 14"	14" - 16"	16" - 18"	18" - 20"	20" - 22"
30 - 35 cm	35 - 40 cm	40 - 45 cm	45 - 50 cm	50 - 55 cm

PATELLA STABILIZER KNEE BRACE

Mueller® Patella Stabilizer Knee Brace helps provide relief from chondromalacia (irritated kneecap) with a comfortable patella buttress.

Features

- Supportive steel springs support both sides of the knee
- Open patella and patella buttress help stabilize and protect your kneecap
- Top and bottom straps allow for customized compression and comfort

Support Level: advanced

Retail

Black 2313SM small; 2313MD medium; 2313LG large; 2313XL x-large; 2313XXL xx-large

sizing: measure around knee

SM	MD	LG	XL	XXL
12" - 14"	14" - 16"	16" - 18"	18" - 20"	20" - 22"
30 - 35 cm	35 - 40 cm	40 - 45 cm	45 - 50 cm	50 - 55 cm



SELF ADJUSTING KNEE STABILIZER

Mueller® Self-Adjusting Knee Stabilizer features criss-cross straps for consistent support and compression above and below your patella.

Features

- Supportive steel springs help support both sides of knee
- Patella buttress helps protect the kneecap
- Perforated fabric increases breathability
- Easy on/off with wraparound design

Support Level: advanced

Retail

Black 56427 OSFM

sizing: measure around knee

ONE SIZE	14" - 20" (35 - 50 cm)
-----------------	------------------------



WRAPAROUND KNEE BRACE DELUXE

Mueller® Wraparound Knee Brace Deluxe features crossing straps and an open patella design for consistent support and compression above and below your patella.

Features

- Supportive steel springs help support both sides of knee
- Open patella and crossing straps help stabilize and protect the kneecap
- Sectional wraparound design for controlled compression
- Neoprene-blend fabric provides soothing warmth

Support Level: advanced

Retail

Black 230SM small; 230MD medium; 230LG large; 230XL x-large; 230XXL xx-large; 230XXXL xxx-large

sizing: measure 3" above knee

SM	MD	LG	XL	XXL	XXXL
10" - 13"	13" - 15"	15" - 17"	17" - 19"	20" - 21.5"	21.5" - 23"
25 - 33 cm	33 - 38 cm	38 - 43 cm	43 - 48 cm	50 - 54 cm	54 - 58 cm

KNEE STABILIZER OPEN PATELLA

The easy on/off wraparound Mueller® Open Patella Knee Stabilizer lets you adjust the fit and compression.

Features

- Supportive steel springs help support both sides of knee
- Open patella relieves pressure on the knee cap
- Patella buttress helps protect the kneecap
- Neoprene blend provides soothing warmth
- Easy on/off with wraparound design

Support Level: advanced

Retail

Black 4539 OSFM
Beige 4538 OSFM

sizing: measure around knee

ONE SIZE	12" - 25" (30 - 63 cm)
-----------------	------------------------



ELASTIC KNEE BRACE

Mueller® Elastic Knee Brace provides moderate medial-lateral support for your weak or injured knee in a lightweight, easy to put on design.

Features

- Supportive steel springs help support both sides of knee
- Open patella relieves pressure on the kneecap
- Sectional wraparound design with adjustable straps provide custom fit for controlled compression
- Not made with natural rubber latex or neoprene

Support Level: moderate

Retail

Black 4540S/M small/medium; 4540L/XL large/x-large

sizing: measure around knee

SM/MD	LG/XL
12" - 16"	16" - 20"
30 - 40 cm	40 - 50 cm



ELASTIC KNEE STABILIZER

Mueller® Elastic Knee Stabilizer is made of lightweight, breathable fabric that helps provide comfortable support without reducing mobility.

Features

- Supportive steel springs help support both sides of knee
- Open patella relieves pressure on the kneecap

Support Level: moderate

Retail

Black 427S/M small/medium
427L/XL large/x-large

sizing: measure around knee

SM/MD	LG/XL
12" - 16"	16" - 20"
30 - 40 cm	40 - 50 cm

HG80® KNEE SUPPORT

Hg80® Knee Support is designed with a lightweight performance materials to enhance all phases of activity (warm-up, high intensity, and cool down therapy).

Features

- Supportive steel springs help support both sides of the knee
- Gel buttress targets compression just below the kneecap to help relieve pain
- Breathable moisture management with superior multi-directional compression
- Permanently bonded antimicrobial barrier*
- Not made with natural rubber latex

Support Level: advanced

*The antimicrobial treatment is intended to protect the brace against odor, staining and deterioration caused by bacteria and microorganisms. This treatment does not extend protection to the skin.

Retail

Black 59910 x-small; 59911 small; 59912 medium; 59913 large;
59914 x-large; 59915 xx-large

sizing: measure around knee

XS	SM	MD	LG	XL	XXL
10" - 12"	12" - 14"	14" - 16"	16" - 18"	18" - 20"	20" - 22"
25 - 30 cm	30 - 35 cm	35 - 40 cm	40 - 45 cm	45 - 50 cm	50 - 55 cm



LIFE CARE® KNEE SUPPORT

Life Care® Knee Support is designed with a lightweight materials that conform to comfortably fit both men and women.

Features

- Supportive steel springs help support both sides of the knee
- Designed to help relieve pain associated with arthritis and tendonitis
- Gel buttress targets compression just below the kneecap to help relieve pain
- Not made with natural rubber latex

Support Level: advanced

Retail

Plum 50991 small; 50992 medium; 50993 large; 50994 x-large
Taupe 57011 small; 57012 medium; 57013 large; 57014 x-large

sizing: measure around knee

SM	MD	LG	XL
12" - 14"	14" - 16"	16" - 18"	18" - 20"
30 - 35 cm	35 - 40 cm	40 - 45 cm	45 - 50 cm





ADJUSTABLE KNEE SUPPORT

Mueller® Adjustable Knee Support is comfortable to wear, giving you a full range of motion.

Features

- Patented adjustable tension straps for custom fit
- Padded double-layer stabilization around kneecap
- Open patella helps relieve pressure
- Neoprene blend provides soothing warmth
- Contour design minimizes bunching
- Antimicrobial treatment help control odors*
- Not made with natural rubber latex

Support Level: moderate

*The antimicrobial treatment is intended to protect the brace against odor, staining and deterioration caused by bacteria and microorganisms. This treatment does not extend protection to the skin.

Retail

Black 4531 OSFM

sizing: measure around knee

ONE SIZE 12" - 21" (30 - 53 cm)

KNEE SUPPORT OPEN PATELLA

Mueller® Open Patella Knee Support features an open patella to help relieve pressure on kneecap and improve circulation, which assists healing and increase joint flexibility.

Features

- Wraparound design for easy on/off with a custom fit
- Soothing warmth and adjustable compression from soft neoprene blend
- Durable stretch nylon-trimmed ends and lock stitch seams

Support Level: moderate

Retail

Black 4532 OSFM
Beige 4536 OSFM

sizing: measure around knee

ONE SIZE 12" - 25" (30 - 63 cm)



KNEE SUPPORT CLOSED PATELLA

Mueller® Closed Patella Knee Support helps relieve pressure on kneecap and improve circulation, which assists healing and increase joint flexibility.

Features

- Wraparound design for easy on/off with a custom fit
- Soothing warmth and adjustable compression from soft neoprene blend
- Durable stretch nylon-trimmed ends and lock stitch seams

Support Level: moderate

Retail

Black 4533 OSFM
Beige 4537 OSFM

sizing: measure around knee

ONE SIZE 12" - 25" (30 - 63 cm)

**KNEE SLEEVE OPEN PATELLA**

Mueller® Knee Sleeve Open Patella is constructed of a soft neoprene blend which delivers even compression and soothing warmth.

Features

- Open patella helps relieve pressure on the kneecap
- Helps improve circulation to assist healing and increased joint flexibility
- Extra-long sleeve form lower thigh to upper shin for a better fit
- Long-lasting durability with nylon-trimmed edges and lock stitch seams

Support Level: moderate

Retail

Black 434SM small; 434MD medium; 434LG large; 434XL x-large

sizing: measure around knee

SM	MD	LG	XL
12" - 14"	14" - 16"	16" - 18"	18" - 20"
30 - 35 cm	35 - 40 cm	40 - 45 cm	45 - 50 cm

KNEE SLEEVE CLOSED PATELLA

Mueller® Knee Sleeve Closed Patella is constructed of a soft neoprene blend which delivers even compression and soothing warmth.

Features

- Helps improve circulation to assist healing and increased joint flexibility
- Extra-long sleeve form lower thigh to upper shin for a better fit
- Long-lasting durability with nylon-trimmed edges and lock stitch seams

Support Level: moderate

Retail

Black 424SM small; 424MD medium; 424LG large; 424XL x-large

sizing: measure around knee

SM	MD	LG	XL
12" - 14"	14" - 16"	16" - 18"	18" - 20"
30 - 35 cm	35 - 40 cm	40 - 45 cm	45 - 50 cm

**ELASTIC KNEE SUPPORT**

The Mueller® Elastic Knee Support is shaped for a comfortable fit while providing firm support

Features

- Lightweight elastic fabric provides firm support while allowing full range of motion
- Contoured design helps prevent slippage and bunching behind the knee
- Reinforced edges improve durability

Support Level: basic

Retail

Black 55251 small; 55252 medium; 55253 large; 55254 x-large

sizing: measure around knee

SM	MD	LG	XL
12" - 14"	14" - 16"	16" - 18"	18" - 20"
30 - 35 cm	35 - 40 cm	40 - 45 cm	45 - 50 cm



DIAMOND PAD ELBOW KNEE SHIN (EKS)

Mueller® Diamond Pad Elbow Knee Shin (EKS) provides protection to the elbow, knee or shins from shocks and bumps during contact sports while providing constant compression and soothing warmth.

Features

- Designed with high impact diamond padding technology
- Lightweight and comfortable fabric is designed to stretch and contour for use as multi-purpose protection
- Provides lightweight padding during activities
- Antimicrobial treatment help control odors*
- Not made with natural rubber latex

Support Level: moderate

*The antimicrobial treatment is intended to protect the brace against odor, staining and deterioration caused by bacteria and microorganisms. This treatment does not extend protection to the skin.

Retail

Black 55371 small (pair); 55372 regular (pair); 55373 large (pair);
55374 x-large (pair)
White 55471 small (pair); 55472 regular (pair); 55473 large (pair);
55474 x-large (pair)

sizing: measure around center of the elbow, knee or calf

SM	MD	LG	XL
9" - 12"	12" - 15"	15" - 18"	18" - 21"
22.8 - 30.4 cm	30.4 - 38.1 cm	38.1 - 45.7 cm	45.7 - 53.3 cm

DIAMOND PAD VOLLEYBALL KNEE PADS

Mueller® Diamond Pad Volleyball Knee Pads protect your knees from shocks and bumps during contact sports while providing constant compression and soothing warmth.

Features

- Designed with high impact diamond padding technology
- Lightweight and comfortable fabric is designed to stretch and contour for use as multi-purpose protection
- Provides lightweight padding for the knees during activities
- Features inner anti-slip strips to help reduce knee pad migration
- Antimicrobial treatment help control odors*
- Not made with natural rubber latex

Support Level: moderate

*The antimicrobial treatment is intended to protect the brace against odor, staining and deterioration caused by bacteria and microorganisms. This treatment does not extend protection to the skin.

Retail

Black 54340 x-small (pair); 54341 small (pair); 54342 medium (pair);
54343 large (pair); 54344 x-large (pair) 54345 xx-large (pair)
White 52210 x-small (pair); 52211 small (pair); 52212 medium (pair);
52213 large (pair); 52214 x-large (pair)

sizing: measure around knee

XS	SM	MD	LG	XL	XXL
10" - 12"	12" - 14"	14" - 16"	16" - 18"	18" - 20"	20" - 22"
25 - 30 cm	30 - 35 cm	35 - 40 cm	40 - 45 cm	45 - 50 cm	50 - 55 cm



STANDARD VOLLEYBALL KNEE PADS

Mueller® Standard Volleyball Knee Pads provide impact protection, greater flexibility, comfort and fit.

Features

- Contoured pad for enhanced flexibility and fit
- Durable thick polyurethane foam pad for impact protection and shock absorption
- 4-way stretch fabric for great comfort, allowing a full range of motion

Support Level: advanced

Retail

White 4544 OSFM (pair)

sizing: measure around knee

ONE SIZE	12" - 18" (30 - 45 cm)
-----------------	------------------------

MULTI-SPORT KNEE PADS

Mueller® Multi-Sport Knee Pads helps protect against bumps, bruises and court/turf burns.

Features

- Elastic material provides easy slide on and a custom fit
- Extra-long elastic sleeve
- Extra-long high density pads easily conform to knee
- Non-tear shell with fully sewn ends

Support Level: advanced

Retail

Black 4535 OSFM (pair)

sizing: measure around knee

ONE SIZE	12" - 18" (30 - 45 cm)
-----------------	------------------------



PRO LEVEL™ KNEE PAD WITH KEVLAR®

Mueller® Pro Level™ Knee Pad with Kevlar helps protect the knee from shocks or bumps.

Features

- Inner foam pad covered with waffled Kevlar® fibers for long-lasting durability
- Neoprene blend helps provide constant compression and provides soothing warmth
- Contour design with super stretch panel helps minimize bunching behind the knee
- Reinforced seams with double layer of binding

Support Level: maximum

Kevlar® is a registered trademark of E.I. du Pont de Nemours and Company, Wilmington, DE

Retail

Black 54530 x-small; 54531 small; 54532 medium; 54533 large; 54534 x-large; 54535 xx-large

sizing: measure around knee

XS	SM	MD	LG	XL	XXL
10" - 12"	12" - 14"	14" - 16"	16" - 18"	18" - 20"	20" - 22"
25 - 30 cm	30 - 35 cm	35 - 40 cm	40 - 45 cm	45 - 50 cm	50 - 55 cm



SHOKK™ KNEE PAD

Mueller® Shokk™ Knee Pad helps protect the knee from shocks or bumps.

Features

- Inner foam pad covered with abrasion-resistant material
- Neoprene blend helps provide constant compression and provides soothing warmth
- Contour design with super stretch panel helps minimize bunching behind the knee
- Reinforced seams with double layer of binding

Support Level: advanced

Retail

Black 54600 x-small (pair); 54601 small (pair); 54602 medium (pair); 54603 large (pair); 54604 x-large (pair); 54605 xx-large (pair)

sizing: measure around knee

XS	SM	MD	LG	XL	XXL
10" - 12"	12" - 14"	14" - 16"	16" - 18"	18" - 20"	20" - 22"
25 - 30 cm	30 - 35 cm	35 - 40 cm	40 - 45 cm	45 - 50 cm	50 - 55 cm



MAX KNEE STRAP

The Mueller® Max Knee Strap is a lightweight, easy solution that helps relieve chronic knee pain.

Features

- Upper compression tube targets quadriceps misalignment
- Lower compression tube targets patellar tendon
- Side compression tubes assist patellar tracking
- Antimicrobial treatment controls or eliminates odors*
- Not made with natural rubber latex

Support Level: maximum

**The antimicrobial treatment is intended to protect the brace against odor, staining and deterioration caused by bacteria and microorganisms. This treatment does not extend protection to the skin.*

Retail

Black 59858 small/medium; 59859 large/x-large; 59857 OSFM

sizing: measure around knee

SM/MD	LG/XL
9" - 12"	12" - 18"
22.8 - 30.4 cm	30.4 - 45.7 cm

sizing: measure around knee

ONE SIZE	12" - 18" (30 - 45 cm)
-----------------	------------------------



JUMPER'S KNEE STRAP

The Mueller® Jumper's Knee Strap helps relieve patellar tendonitis.

Features

- Tubular insert helps improve patellar tracking
- Helps relieve pain from frequent running and jumping
- Focused, mild pressure on patellar tendon just below the kneecap
- Antimicrobial treatment controls or eliminates odors*

Support Level: moderate

**The antimicrobial treatment is intended to protect the brace against odor, staining and deterioration caused by bacteria and microorganisms. This treatment does not extend protection to the skin.*

Retail

Colors 991 Red OSFM; 992 Black OSFM; 993 Blue OSFM; 994 Gold OSFM; 995 Green OSFM; 996 Orange OSFM; 997 Pink OSFM

sizing: measure around knee

ONE SIZE	10" - 22" (25 - 55 cm)
-----------------	------------------------



ITB STRAP

Mueller® ITB Strap addresses pain associated with iliotibial band (ITB) syndrome.

Features

- Helps relieve pain on the outer side of the knee
- Textured neoprene helps prevent slipping
- Antimicrobial treatment controls or eliminates odors*
- Not made with natural rubber latex

Support Level: moderate

**The antimicrobial treatment is intended to protect the brace against odor, staining and deterioration caused by bacteria and microorganisms. This treatment does not extend protection to the skin.*

Retail

Black 57927 OSFM

sizing: measure around knee

ONE SIZE	10" - 22" (25 - 55 cm)
-----------------	------------------------



CHO PAT® DUAL ACTION KNEE STRAP

The Cho Pat® Dual Action Knee Strap helps relieve chronic knee pain.

Features

- Upper compression tube targets quadriceps misalignment
- Lower compression tube targets patellar tendon
- Not made with natural rubber latex

Support Level: advanced

CHO-PAT® is a registered trademark of Cho-Pat Inc., Hainesport, NJ

Retail

Black 985SM small; 985MD medium; 985LG large

sizing: measure around knee

SM	MD	LG
12" - 14"	14" - 16"	16" - 18"
30 - 35 cm	35 - 40 cm	40 - 45 cm

CHO PAT®

The Cho Pat® Knee Strap targets pressure on the patellar tendon.

Features

- Helps add patellar stability and ensures proper tracking
- Designed to help provide relief from chondromalacia (irritated kneecap)
- Not made with natural rubber latex

Support Level: moderate

CHO-PAT® is a registered trademark of Cho-Pat Inc., Hainesport, NJ

Retail

Beige 982XS x-small; 982SM small; 982MD medium; 982LG large; 982XL x-large

sizing: measure around knee

XS	SM	MD	LG	XL
8" - 10"	10" - 13"	13" - 15"	15" - 17"	17" - 19"
20 - 25 cm	25 - 33 cm	33 - 38 cm	38 - 43 cm	43 - 48 cm



ADJUSTABLE ELBOW SUPPORT

The Mueller® Adjustable Elbow Support features HydraMesh® for increased breathability and comfort.

Features

- Slip-on design for easy adjustments
- Extended coverage for additional support
- Adjust straps for a custom, comfortable fit
- Soft neoprene blend retains body heat
- HydraMesh® fabric panel manages moisture
- Antimicrobial treatment controls or eliminates odors*

Support Level: advanced

*The antimicrobial treatment is intended to protect the brace against odor, staining and deterioration caused by bacteria and microorganisms. This treatment does not extend protection to the skin.

Retail

Black 75217 OSFM

sizing: measure around elbow

ONE SIZE 7" - 14" (17 - 35 cm)

ELBOW SUPPORT

The Mueller® Adjustable Elbow Support features controlled compression for a comfortable fit and soothing warmth.

Features

- Adjustable straps for a customized fit
- Soothing warmth from neoprene blend helps keep elbow flexible

Support Level: moderate

Retail

Black 4521 OSFM

sizing: measure around elbow

ONE SIZE 10" - 18" (25 - 45 cm)



Hg80® ELBOW SUPPORT

Hg80® Elbow Support is designed with a lightweight performance materials to enhance all phases of activity (warm-up, high intensity, and cool down therapy).

Features

- Gel pads provide compression and support
- Lightweight materials for comfortable fit
- Permanently bonded antimicrobial barrier*
- Not made with natural rubber latex

Support Level: moderate

* The antimicrobial treatment is intended to protect the brace and does not extend protection to the skin.

Retail

Black 79911 small; 79912 medium; 79913 large; 79914 x-large; 79915 xx-large

sizing: measure around elbow

SM	MD	LG	XL	XXL
7" - 9"	9" - 11"	11" - 13"	13" - 15"	15" - 17"
17 - 22 cm	22 - 27 cm	27 - 33 cm	33 - 38 cm	38 - 43 cm

LIFE CARE® ELBOW SUPPORT

Life Care® Elbow Support is designed with a lightweight materials that conform to comfortable fit both men and women.

Features

- Designed to help relieve pain associated with arthritis and tendonitis
- Gel buttress targets compression on the side of the elbow to help relieve pain
- Not made with natural rubber latex

Support Level: moderate

Retail

Plum 74111 small; 74112 medium; 74113 large; 74114 x-large
Taupe 78211 small; 78212 medium; 78213 large; 78214 x-large

sizing: measure around elbow

SM	MD	LG	XL
7" - 9"	9" - 11"	11" - 13"	13" - 15"
17.7 - 22.8 cm	22.8 - 27.9 cm	27.9 - 33 cm	33 - 38.1 cm



ELASTIC ELBOW SUPPORT

The Mueller® Elastic Elbow Support provides firm, comfortable support for stiff, weak, or sore elbows.

Features

- Lightweight elastic knit
- Firm support while allowing you a full range of movement
- Custom top weave helps prevent rolling
- Reinforced edges improve durability

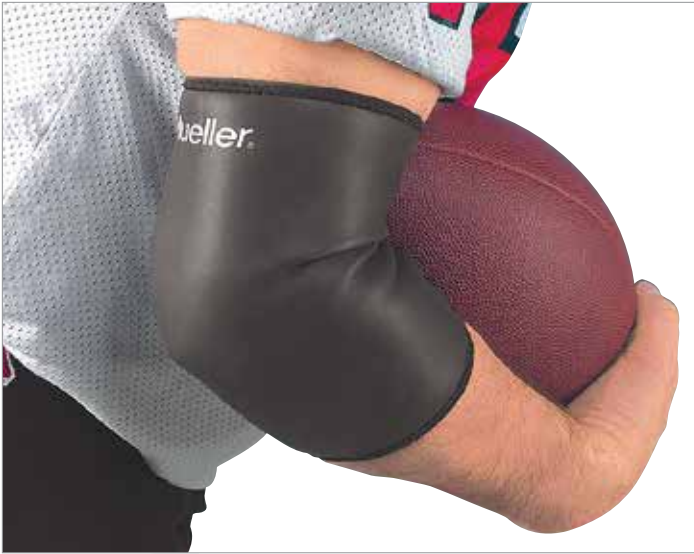
Support Level: basic

Retail

Black 74181 small; 74182 medium; 74183 large; 74184 x-large

sizing: measure around elbow

SM	MD	LG	XL
7" - 10"	10" - 12"	12" - 13"	13" - 15"
17 - 25 cm	25 - 30 cm	30 - 33 cm	33 - 38 cm



PROFESSIONAL ELBOW SLEEVE

Mueller® Professional Elbow Sleeves help protect the elbow from bumps and abrasions during contact sports.

Features

- Anti-slip outer surface for ultimate ball control
- Contoured design for better fit
- Thin profile does not interfere with arm movement

Support Level: moderate

Retail

Black 410Y youth; 410REG regular; 410LG large

sizing: measure around elbow

YTH	REG	LG
9" - 11"	11" - 14"	14" - 17"
22 - 27 cm	27 - 35 cm	35 - 43 cm



ELBOW SLEEVE

The Mueller® Elbow Sleeve offers soothing warmth to help promote healing and flexibility.

Features

- Contoured shape extends over the forearm for comfortable fit
- Soothing warmth from neoprene blend helps keep elbow flexible

Support Level: basic

Retail

Black 414SM small; 414MD medium; 414LG large; 414XL x-large

sizing: measure around elbow

SM	MD	LG	XL
7" - 10"	10" - 12"	12" - 13"	13" - 15"
17 - 25 cm	25 - 30 cm	30 - 33 cm	33 - 38 cm



TURF SLEEVE

Mueller® Turf Sleeve helps protect against turf burns and court abrasions.

Features

- Made of a lightweight and breathable elastic material
- Extra long sleeve for more protection
- Provides compression for elbows, forearms, and shins

Support Level: basic

Retail

White 4116LG large (pair)
4116XL x-large (pair)
Black 4111LG large (pair)
4111XL x-large (pair)

sizing: measure around forearm

SM/MD	LG/XL
7" - 11"	11" - 15"
17 - 27 cm	27 - 38 cm



PERFORMANCE SLEEVE

The Mueller® Performance Sleeve can be used to cover cuts, scrapes, or outer surface injuries and protect the arm from further harm.

Features

- Made of smooth Lycra fabric
- Unique seamless design prevents skin irritation
- Snug bands at top and bottom to keep sleeve in place to prevent slipping or bunching
- Provides comfortable compression
- Not made with natural rubber latex

Support Level: basic

Retail

Colors 70007 Black OSFM
70017 White OSFM
70027 Pink OSFM
70037 Red OSFM
70047 Blue OSFM

sizing: measure circumference of bicep

ONE SIZE	14" - 18" (35.6 - 45.7 cm)
-----------------	----------------------------



HG80® PREMIUM TENNIS ELBOW BRACE

Mueller® Hg80® Premium Tennis Elbow Brace is made with improved Mueller exclusive HydraCinn® fabric is a high-performance, moisture-wicking material with an anti-microbial barrier.*

Features

- Provides extreme comfort with targeted pressure on your extensor muscle
- New and improved lightweight materials with reflective binding
- Not made with natural rubber latex

Support Level: advanced

*The antimicrobial treatment is intended to protect the brace against odor, staining and deterioration caused by bacteria and microorganisms. This treatment does not extend protection to the skin.

Retail

Black 79018 SM/MD; 79019 LG/XL

sizing: measure around forearm

SM/MD	LG/XL
7" - 11"	11" - 15"
17 - 27 cm	27 - 38 cm



TENNIS ELBOW SUPPORT W/ GEL PAD

Mueller® Tennis Elbow Support with Gel Pad helps relieve tennis elbow pain by applying targeted compression.

Features

- Adjustable strap gives you a custom fit
- Antimicrobial treatment helps reduce odor causing bacteria*
- Not made with natural rubber latex

Support Level: advanced

*The antimicrobial treatment is intended to protect the brace against odor, staining and deterioration caused by bacteria and microorganisms. This treatment does not extend protection to the skin.

Retail

Black 70207 OSFM

sizing: measure around elbow

ONE SIZE	10" - 14" (25 - 35 cm)
----------	------------------------



TENNIS ELBOW SUPPORT

The Mueller® Tennis Elbow Support helps relieve pain and discomfort associated with tennis elbow.

Features

- Adjustable strap helps provide comfortable compression
- Lightweight, durable neoprene-blend fabric provides soothing warmth

Support Level: moderate

Retail

Black 819 OSFM
Beige 820 OSFM

sizing: measure around elbow

ONE SIZE	7" - 14" (17 - 35 cm)
----------	-----------------------



AIRCAST® TENNIS ELBOW SUPPORT

The Mueller® Aircast® Tennis Elbow Support applies 50% more pressure directly on your extensor muscle for temporary pain relief.

Features

- The aircell provides patented support
- Comfortable for all-day wear
- Not made with natural rubber latex

Support Level: maximum

AIRCAST® is a registered trademark of Aircast, Inc., Summit, NJ

Retail

Black 4528 OSFM
Beige 4527 OSFM

sizing: measure around elbow

ONE SIZE	up to 13" (33 cm)
----------	-------------------



DIAMOND PAD ELBOW KNEE SHIN (EKS)

Mueller® Diamond Pad Elbow Knee Shin (EKS) provides protection to the elbow, knee or shins from shocks and bumps during contact sports while providing constant compression and soothing warmth.

Features

- Designed with high impact diamond padding technology
- Lightweight and comfortable fabric is designed to stretch and contour for use as multi-purpose protection
- Provides lightweight padding during activities
- Antimicrobial treatment help control odors*
- Not made with natural rubber latex

Support Level: moderate

*The antimicrobial treatment is intended to protect the brace against odor, staining and deterioration caused by bacteria and microorganisms. This treatment does not extend protection to the skin.

Retail

- Black** 55371 small (pair); 55372 regular (pair); 55373 large (pair); 55374 x-large (pair)
- White** 55471 small (pair); 55472 regular (pair); 55473 large (pair); 55474 x-large (pair)

sizing: measure around center of the elbow, knee or calf

SM	MD	LG	XL
9" - 12"	12" - 15"	15" - 18"	18" - 21"
22.8 - 30.4 cm	30.4 - 38.1 cm	38.1 - 45.7 cm	45.7 - 53.3 cm

DIAMOND PAD ELBOW SLEEVE

Mueller® Diamond Padded Elbow Sleeve has high-impact diamond padding technology.

Features

- Lightweight and comfortable fabric
- Provides constant compression and soothing warmth
- Stretches and contours to fit your arm
- Elastic top helps prevent slippage
- Not made with natural rubber latex

Support Level: advanced

Retail

- Black** 75701 small; 75702 medium; 75703 large; 75704 x-large
- White** 75711 small; 75712 medium; 75713 large; 75714 x-large

sizing: measure around elbow

SM	REG	LG	XL
8" - 11"	11" - 13"	12" - 15"	15" - 18"
20.3 - 27.9 cm	25.4 - 33 cm	30.4 - 38.1 cm	38.1 - 45.7 cm



PRO LEVEL™ ELBOW PAD WITH KEVLAR

Mueller® Pro Level™ Elbow Pad with Kevlar® provides superior protection while maintaining its durability.

Features

- Waffled Kevlar® covers inner foam pad
- Lock-stitch seams reinforced with double layer of binding
- Neoprene blend provides constant compression and retains soothing body heat

Support Level: maximum

Kevlar® is a registered trademark of E. I. du Pont de Nemours and Company, Wilmington, DE

Retail

- Black** 76000 X-small; 76001 small; 76002 medium; 76003 large; 76004 x-large; 76005 xx-large

sizing: measure around elbow

XS	SM	MD	LG	XL	XXL
8.5" - 9.5"	9.5" - 10.5"	10.5" - 11.5"	11.5" - 12.5"	12.5" - 14"	14" - 16"
21 - 24 cm	24 - 6 cm	26 - 29 cm	29 - 31 cm	31 - 35 cm	35 - 40 cm



SHOKK ELBOW PAD

Mueller® Shokk Elbow Pads provides extreme comfort and lightweight padding.

Features

- Abrasion resistant material covers foam pad
- Contour design for better fit
- Stretch panel helps minimize bunching
- Neoprene blend helps provide constant compression and retains soothing body heat

Support Level: maximum

Retail

Black 74600 X-small (pair); 74601 small (pair); 74602 medium (pair); 74603 large (pair); 74604 x-large (pair); 74605 xx-large (pair)

sizing: measure around elbow

XS	SM	MD	LG	XL	XXL
8.5" - 9.5"	9.5" - 10.5"	10.5" - 11.5"	11.5" - 12.5"	12.5" - 14"	14" - 16"
21 - 24 cm	24 - 26 cm	26 - 29 cm	29 - 31 cm	31 - 35 cm	35 - 40 cm

PADDED ELBOW SLEEVE

Mueller® Padded Elbow Sleeve provides a unique buttress style pad and contoured design for flexible protection.

Features

- Thinner, textured neoprene on inner side helps players better grip the football
- Extra-long 10" sleeve for full protection
- Fully trimmed edges provide scuff protection

Support Level: maximum

Retail

Black 417S/M small/medium; 417L/XL large/x-large; 417-2X/3X xx-large/xxx-large

sizing: measure around elbow

SM/MD	LG/XL	XXL/XXXL
7" - 12"	12" - 15"	15" - 17"
17 - 30 cm	30 - 38 cm	38 - 43 cm



ELBOW PADS

Mueller® Elbow Pads are a high density contoured pad to help protect against bumps, bruises, and court/turf burns.

Features

- High-density washable foam pads
- Longer 9" pad protects elbow and forearm
- Contoured at joint for unrestricted movement
- Long 11" elastic knit sleeve helps prevent pad from slipping

Support Level: moderate

Retail

Black 4525 OSFM (pair)

sizing: measure around elbow

ONE SIZE	10" - 18" (25 - 45 cm)
-----------------	------------------------



HG80® PREMIUM WRIST BRACE

Mueller® Hg80® Premium Wrist Brace is made with improved Mueller exclusive HydraCinn® fabric is a high-performance, moisture-wicking material with an anti-microbial barrier.*

Features

- Provides extreme comfort with firm support for your wrist
- Flexible steel springs on top and bottom of wrist for double protection
- New and improved lightweight materials with reflective binding
- Not made with natural rubber latex

Support Level: advanced

*The antimicrobial treatment is intended to protect the brace against odor, staining and deterioration caused by bacteria and microorganisms. This treatment does not extend protection to the skin.

Retail

Black 79718 SM/MD; 79719 LG/XL

sizing: measure around wrist

SM/MD	LG/XL
6" - 8"	8" - 9"
15 - 20 cm	20 - 22 cm

MUELLER GREEN FITTED WRIST BRACE

Mueller® Green Fitted Wrist Brace supports your weak or injured wrist while your thumb and fingers maintain full range of motion.

Features

- Helps relieve pain and swelling associated with carpal tunnel syndrome
- Support you weak or injured wrist while allowing your thumb and fingers full range of motion
- Made with soft, lightweight fabric
- Comfortable to wear all day.
- Made from recycled materials*
- Antimicrobial treatment controls or eliminates odors**
- Not made with natural rubber latex

Support Level: maximum

*Mueller® Green Products: Created from material made without the use of petroleum. The green inner lining is manufactured with 67% recycled plastic PET bottles. The spandex binding is made from 73% recycled materials. Even the packaging is printed with so-base inks and 100% recyclable.

**The antimicrobial treatment is intended to protect the brace against odor, staining and deterioration caused by bacteria and microorganisms. This treatment does not extend protection to the skin.

Retail

Black 86271 right SM/MD; 86273 right LG/XL
86272 left SM/MD; 86274 left LG/XL

sizing: measure around wrist

SM/MD	LG/XL
5" - 8"	8" - 10"
12 - 20 cm	20 - 25 cm



HG80® WRIST BRACE

Mueller-exclusive HydraCinn® high-performance fabric wicks moisture away from your wrist helping prevent irritation.

Features

- Breathable, antimicrobial* base sleeve is soft to the touch
- Flexible steel springs over the top and bottom of wrist provide double protection
- Not made with natural rubber latex

Support Level: advanced

* The antimicrobial treatment is intended to protect the brace and does not extend protection to the skin.

Retail

Black 74618 regular; 74619 large

sizing: measure around wrist

REG	LG
6" - 8"	8" - 9"
15 - 20 cm	20 - 22 cm

WRIST BRACE W/ SPLINT

Mueller® Wrist Brace w/Splint helps relieve pain associated with Carpal Tunnel Syndrome.

Features

- Adjustable wraparound straps for a custom fit
- Removable splint
- Padding around splint for extra comfort
- Made with breathable materials

Support Level: maximum

Retail

Black 300 OSFM
Beige 306 OSFM

sizing: measure around wrist

ONE SIZE	6" - 9" (15 - 22 cm)
-----------------	----------------------



WRIST STABILIZER

Mueller® Carpal Tunnel Wrist Stabilizer has an extra-long metal spoon to help relieve pain associated with Carpal Tunnel Syndrome.

Features

- Extra-long 6.5" removable metal spoon
- Two side splints
- Padding around splint for extra comfort
- Made with breathable materials

Support Level: maximum

Retail

Beige 307 SM/MD; 308 LG/XL

sizing: measure around wrist

SM/MD	LG/XL
5" - 8"	8" - 10"
12 - 20 cm	20 - 25 cm



WRIST BRACE

Mueller® Wrist Brace provides a custom fit with wrist stability from steel springs.

Features

- Adjustable wraparound design for custom fit
- Steel springs help provide stability to your wrist
- Made with breathable materials

Support Level: advanced

Retail

Black 222 OSFM
Beige 221 OSFM

sizing: measure around wrist

ONE SIZE 7" - 10" (17 - 25 cm)

NEOPRENE WRIST SLEEVE

Mueller® Neoprene Wrist Sleeve provides compression and support to your wrist.

Features

- Wraparound design and adjustable straps for custom fit
- Soft neoprene blend retains heat to help improve circulation and flexibility

Support Level: moderate

Retail

Black 400SM small; 400MD medium; 400LG large; 400 XL x-large

sizing: measure around wrist

SM	MD	LG	XL
6" - 7"	7" - 8"	8" - 9"	9" - 10"
15 - 17 cm	17 - 20 cm	20 - 22 cm	22 - 25 cm



WRIST SUPPORT WRAP

Mueller® Wrist Support Wrap provides soothing warmth to help promote healing and flexibility.

Features

- Unique thumb loop for easy on/off
- Soft neoprene blend retains heat
- Perforated fabric increases breathability
- Antimicrobial treatment controls or eliminates odors*
- Not made with natural rubber latex

Support Level: moderate

*The antimicrobial treatment is intended to protect the brace against odor, staining and deterioration caused by bacteria and microorganisms. This treatment does not extend protection to the skin.

Retail

Black 4505 OSFM

sizing: measure around wrist

ONE SIZE 6" - 12" (15 - 30 cm)



ELASTIC WRIST SUPPORT W/LOOP

Mueller® Elastic Wrist Support w/Loop provides basic support for your wrist.

Features

- Elastic loop makes it easier to adjust
- Wraparound strap provides adjustable compression

Support Level: basic

Retail

Black 961 OSFM

sizing: measure around wrist

ONE SIZE	6" - 12" (15 - 30 cm)
-----------------	-----------------------

HG80® WRIST SUPPORT

Mueller® Hg80® Wrist Support is designed with a lightweight performance materials to enhance all phases of activity (warm-up, high intensity, and cool down therapy).

Features

- Extreme comfort and lightweight support
- Antimicrobial treatments controls or eliminates odors*
- Not made with natural rubber latex

Support Level: moderate

** The antimicrobial treatment is intended to protect the brace and does not extend protection to the skin.*

Retail

Black 79111 small; 79112 medium; 79113 large; 79114 x-large

sizing: measure around wrist

SM	MD	LG	XL
6.5" - 7.5"	7.5" - 8.5"	8.5" - 9.5"	9.5" - 10.5"
16 - 19 cm	19 - 21 cm	21 - 24 cm	24 - 26 cm



LIFE CARE® WRIST SUPPORT

Life Care® Wrist Support is designed with a lightweight materials that conform to comfortable fit both men and women.

Features

- Designed to help relieve pain associated with arthritis and tendonitis
- Not made with natural rubber latex

Support Level: moderate

Retail

Plum 70991 small; 70992 medium; 70993 large; 70994 x-large
 Taupe 77011 small; 77012 medium; 77013 large; 77014 x-large

sizing: measure around wrist

SM	MD	LG	XL
6.5" - 7.5"	7.5" - 8.5"	8.5" - 9.5"	9.5" - 10.5"
16 - 19 cm	19 - 21 cm	21 - 24 cm	24 - 26 cm





MULTI PURPOSE BACK BRACE

Mueller® Multi-Purpose Back Brace provides lightweight lower back support with elastic bands so you remain active.

Features

- Adjustable tension elastic straps
- Eight steel springs for support
- 9" elastic band
- Foam pad conforms to your body for comfortable fit
- Not made with natural rubber latex

Support Level: advanced

Retail

White 250SM small; 250MD medium; 250LG large; 250XL x-large; 250XXL xx-large

sizing: measure around waist

SM	MD	LG	XL	XXL
28" - 32"	32" - 36"	36" - 40"	40" - 44"	44" - 48"
71-81 cm	81-91 cm	91-101 cm	101-111 cm	111-121 cm

LUMBAR BACK BRACE W/REMOVABLE PAD

Mueller® Lumbar Back Brace w/Removable Pad provides concentrated lumbar support.

Features

- Additional stability from steel springs that conform to your back
- Internal molded plastic component helps eliminate brace rolling or bunching
- Double layer design with adjustable compression for abdomen and lower back

Support Level: maximum

Retail

Black 255 regular; 64179 plus size

sizing: measure around waist

REGULAR	PLUS SIZE
28" - 50"	50" - 70"
71 - 127 cm	127 - 178 cm



ADJUSTABLE BACK BRACE

Mueller® Adjustable Back Brace provides a tapered cut for a custom fit.

Features

- Eight flexible steel springs conform for lumbar support
- Broad support from 9" elastic band
- Adjustable tension from 4" elastic band

Support Level: advanced

Retail

Black 4581 OSFM

sizing: *measure around waist*

ONE SIZE 28" - 50" (71 - 127 cm)

BACK SUPPORT W/SUSPENDERS

Mueller® Back Support with Suspenders has flexible stays and adjustable suspenders to help support lower back.

Features

- Flexible stays help support lower back
- Breathable mesh fabric with elastic tension bands
- Quick & easy closures
- Suspenders are adjustable and removable

Support Level: advanced

Retail

Black 252 OSFM

sizing: *measure around waist*

ONE SIZE 26" - 44" (66 - 111 cm)



ADJUSTABLE BACK & ABDOMINAL SUPPORT

Mueller® Adjustable Back and Abdominal Support has easy one handed adjustments to help flatten your stomach while straightening your back.

Features

- Unique cinching pull-strap for easy one-handed tightening for abdominal compression and lumbar support
- Smooth and comfortable rigid support panels provide support
- Helps promote improved posture
- Extends from L-1 to below L-5 vertebra

Support Level: maximum

Retail

Black 68147 OSFM

sizing: *measure around waist*

ONE SIZE 32" - 51" (81.2 - 129.5 cm)

MUELLER GREEN ADJUSTABLE BACK & ABDOMINAL SUPPORT

Mueller® Green Adjustable Back & Abdominal Support helps protect against lower back pain, weakness and fatigue with maximum support

Features

- Unique cinching pull-strap for easy one-handed tightening for abdominal compression and lumbar support
- Extends from L-1 to below L-5 vertebra
- Made from recycled materials*
- Antimicrobial treatment helps reduce odor causing bacteria**
- Not made with natural rubber latex

Support Level: maximum

*Mueller® Green Products: Created from material made without the use of petroleum. The green inner lining is manufactured with 67% recycled plastic PET bottles. The spandex binding is made from 73% recycled materials. Even the packaging is printed with soy-base inks and 100% recyclable.

**The antimicrobial treatment is intended to protect the brace against odor, staining and deterioration caused by bacteria and microorganisms. This treatment does not extend protection to the skin.

Retail

Black 86741 OSFM

sizing: *measure around waist*

ONE SIZE 32" - 51" (81.2 - 129.5 cm)



WAIST SUPPORT

The Mueller® Waist Support's wraparound design easily conforms to hips and provides waist-slimming support.

Features

- Soft neoprene blend and contoured shape easily conforms to hips
- Retains heat for soothing warmth
- Single large band for easy on and off
- Not made with natural rubber latex

Support Level: basic

Retail

Black 68127 OSFM

sizing: *measure around waist*

ONE SIZE 32" - 51" (81.2 - 129.5 cm)



**SUPPORTING
YOUR
PASSION**



MUELLER

GRADUATED COMPRESSION

- Helps improve blood and oxygen circulation
- Helps reduce muscle vibration, which may cause soreness and fatigue
- Antimicrobial* garment odor control
- Moisture management material
- Extremely durable fabric with breathable performance
- Not made with natural rubber latex

* The antimicrobial treatment is intended to protect the garment and does not extend protection to the skin.



GRADUATED COMPRESSION SOCKS PERFORMANCE

Helps provide graduated performance compression for your feet.

Features

- Seamless design
- Mueller exclusive Hydrashade™ UV protection fabric UPF 50+
- Performance compression level 20-30 mmHg

Retail

Black 42020 x-small (pair); 42021 small (pair); 42022 medium (pair); 42023 large (pair); 42024 x-large (pair); 42025 xx-large (pair)

sizing: according to shoe size

	XS	SM	MD	LG	XL	XXL
US MEN	4 - 6	6 - 8	8 - 10	10 - 12	12 - 14	14 - 16
US WOMEN	5 - 7	7 - 9	9 - 11	11 - 13	13 - 15	15 - 17

GRADUATED COMPRESSION SOCKS RECOVERY

Helps provide graduated recovery compression for your feet.

Features

- Recovery compression level 15-20 mmHg

Retail

Black 43020 x-small (pair); 43021 small (pair); 43022 medium (pair); 43023 large (pair); 43024 x-large (pair); 43025 xx-large (pair)

sizing: according to shoe size

	XS	SM	MD	LG	XL	XXL
US MEN	4 - 6	6 - 8	8 - 10	10 - 12	12 - 14	14 - 16
US WOMEN	5 - 7	7 - 9	9 - 11	11 - 13	13 - 15	15 - 17



GRADUATED COMPRESSION CALF SLEEVES PERFORMANCE

Helps provide graduated performance compression for your calf.

Features

- Seamless design
- Mueller exclusive Hydrashade™ UV protection fabric UPF 50+
- Performance compression level 20-30 mmHg

Retail

Black 45020 x-small (pair); 45021 small (pair); 45022 medium (pair); 45023 large (pair); 45024 x-large (pair); 45025 xx-large (pair)

sizing: measure your calf circumference at the widest point

XS	SM	MD	LG	XL	XXL
9" - 11"	11" - 13"	13" - 15"	15" - 17"	17" - 19"	19" - 21"
22 - 27 cm	27 - 33 cm	33 - 38 cm	38 - 43 cm	43 - 48 cm	48 - 53 cm

GRADUATED COMPRESSION LEG SLEEVES PERFORMANCE

Helps provide graduated performance compression for your legs.

Features

- Seamless design
- Mueller exclusive Hydrashade™ UV protection fabric UPF 50+
- Performance compression level 20-30 mmHg

Retail

Black 46020 x-small (pair); 46021 small (pair); 46022 medium (pair); 46023 large (pair); 46024 x-large (pair); 46025 xx-large (pair); 46026 xxx-large (pair)

sizing: measure your thigh circumference at the widest point

XS	SM	MD	LG	XL	XXL	XXXL
15" - 19"	17" - 21"	19" - 23"	21" - 25"	23" - 27"	25" - 29"	27" - 31"
38 - 48 cm	43 - 53 cm	48 - 58 cm	53 - 63 cm	58 - 68 cm	63 - 73 cm	68 - 78 cm

sizing: measure your calf circumference at the widest point

XS	SM	MD	LG	XL	XXL	XXXL
13" - 14"	14" - 15"	15" - 16"	16" - 17"	17" - 18"	18" - 19"	19" - 20"
33 - 35 cm	35 - 38 cm	38 - 40 cm	40 - 43 cm	43 - 45 cm	45 - 48 cm	48 - 50 cm



GRADUATED COMPRESSION ANKLE SOCKS PERFORMANCE

Helps provide graduated performance compression for your feet

Features

- Performance compression level 20-30 mmHg

Retail

Black 47020 x-small (pair); 47021 small (pair); 47022 medium (pair); 47023 large (pair); 47024 x-large (pair); 47025 xx-large (pair)
 White 48020 x-small (pair); 48021 small (pair); 48022 medium (pair); 48023 large (pair); 48024 x-large (pair); 48025 xx-large (pair)

sizing: according to shoe size

	XS	SM	MD	LG	XL	XXL
US MEN	4 - 6	6 - 8	8 - 10	10 - 12	12 - 14	14 - 16
US WOMEN	5 - 7	7 - 9	9 - 11	11 - 13	13 - 15	15 - 17



GRADUATED COMPRESSION ARM SLEEVES PERFORMANCE

Helps provide graduated performance compression for your arms.

Features

- Seamless design
- Mueller exclusive Hydrashade™ UV protection fabric UPF 50+
- Performance compression level 20-30 mmHg

Retail

Black 72020 x-small (pair); 72021 small (pair); 72022 medium (pair); 72023 large (pair); 72024 x-large (pair); 72025 xx-large (pair)

sizing: measure your bicep circumference at the widest point

XS	SM	MD	LG	XL	XXL
8" - 10"	10" - 12"	12" - 14"	14" - 16"	16" - 18"	18" - 20"
20 - 25 cm	25 - 30 cm	30 - 35 cm	35 - 40 cm	40 - 45 cm	45 - 50 cm

SHOULDER SUPPORT

The Mueller® Shoulder Support helps support your shoulder while still providing a full range of motion.

Features

- Soft neoprene blend provides even compression
- Retains body heat to help increase circulation, promote healing, and relieve pain
- Recommended for muscle strains, ligament sprains, injuries to rotator cuff, impingement syndrome, arthritis and bursitis of the shoulder
- Multi-strap adjustment system provides a stable custom fit
- Mesh panel provides breathability and allows comfortable use for men and women
- X-Strap positions and correctly aligns the shoulder
- Made with latex free materials

Support Level: advanced

Team

Black 69530 x-small; 69538 small/medium; 69539 large/x-large; 69535 xx-large

Retail

Black 60120 x-small; 60128 small/medium; 60129 large/x-large; 60125 xx-large

sizing: measure around center of chest

XS	SM/MD	LG/XL	XXL
26" - 34"	32" - 40"	38" - 46"	44" - 52"
66 - 86 cm	81 - 101 cm	96 - 116 cm	106 - 132 cm



SHOULDER BRACE

Mueller® Shoulder Brace is designed to hold your arm in place while promoting healing of your shoulder.

Features

- Soft neoprene blend retains body heat to help improve circulation
- Contour design and fully trimmed edges provide comfortable fit

Support Level: maximum

Retail

White Left: 310SM small; 310MD medium; 310LG large; 310XL x-large; 310XXL xx-large
Right: 315SM small; 315MD medium; 315LG large; 315XL x-large; 315XXL xx-large

sizing: measure around chest

SM	MD	LG	XL	XXL
38" - 40"	40" - 42"	42" - 44"	44" - 46"	46" - 48"
96 - 101 cm	101 - 106 cm	106 - 111 cm	111 - 116 cm	116 - 121 cm



THIGH SUPPORT

Mueller® Thigh Support is an adjustable wrap for custom fit.

Features

- Soft neoprene blend retains body heat to help improve circulation
- Contour design and fully trimmed edges provide comfortable fit

Support Level: moderate

Retail

Black 4491 OSFM

sizing: measure around thigh

ONE SIZE	15" - 35" (38 - 88 cm)
-----------------	------------------------

THIGH SLEEVE

Mueller® Thigh Sleeve is a fitted sleeve for uniform compression.

Features

- Extra-long sleeve with contour design and fully trimmed edges
- Soft neoprene blend retains body heat to help improve circulation

Support Level: moderate

Retail

Black 444SM small; 444MD medium; 444LG large; 444XL x-large

sizing: measure around thigh

SM	MD	LG	XL
21" - 23"	23" - 25"	25" - 27"	27" - 29"
53 - 58 cm	58 - 63 cm	63 - 68 cm	68 - 73 cm



ARCH SUPPORT

The Mueller® Arch Support provides upward compression to help relieve pain associated with Plantar Fasciitis.

Features

- Provides targeted compression with a soft gel pad
- Adjustable strap for a custom fit
- Not made with natural rubber latex

Support Level: moderate

Retail

Black 46027 OSFM

CHO PAT® ACHILLES TENDON STRAP

Helps provide relief from discomfort of Achilles Tendonitis.

Features

- Tubular insert helps relieve pain and discomfort
- Adjustable strap to reduce stress on the Achilles
- Use in conjunction with icing and stretching
- Made with latex free materials

Support Level: advanced

CHO-PAT® is a registered trademark of Cho-Pat Inc., Hainesport, NJ

Retail

Beige 980MD medium; 980LG large

sizing: measure around ankle

MD	LG
10.5" - 11.5"	11.5" - 12.5"
26 - 29 cm	29 - 31 cm

HEEL SUPPORT

The Mueller® Heel Support helps absorb shock of the heel strike.

Features

- Gel pad helps stabilize the ankle and limit lateral medial movement
- Provides soothing compression

Support Level: moderate

Retail

Beige 6551 small/medium

sizing: according to shoe size

	SM/MD
US MEN	6 - 9.5
US WOMEN	7.5 - 11.5



STANDARD HEEL CUP

Mueller® Standard Heel Cups provide lightweight protection for everyday pain of heel strike.

Features

- Built in shock absorbers help shield your heel from impact
- Helps prevent sore heels and knees, shin splints, and heel spurs

Support Level: moderate

Retail

Gold 970REGA regular (pair); 970LGA large (pair)

sizing: by body weight

REG	LG
under 175 lbs	over 175 lbs

PRO HEEL CUP

Mueller® Pro Heel Cups provide protection for high-impact sports.

Features

- Unique molded pattern helps divert shock away from the heel
- Assist in prevention of shin splints, and heel spurs

Support Level: advanced

Retail

Green 971REGA regular (pair); 971LGA large (pair)

sizing: by body weight

REG	LG
under 175 lbs	over 175 lbs



COMPRESSION GLOVES

Mueller® Compression Gloves help relieve pain associated with arthritis and Carpal Tunnel Syndrome.

Features

- Fingerless design for full range of movement
- Breathable fabric provides compression

Support Level: moderate

Retail

Beige 6901 small (pair); 6903 medium (pair); 6904 large (pair)

sizing: measure around palm

SM	MD	LG
6.5" - 7.5"	7.5" - 8.5"	8.5" - 9.5"
16.5 - 19.0 cm	19.0 - 21.5 cm	21.5 - 24.1 cm

THUMB STABILIZER

Mueller® Thumb Stabilizer has an adjustable splint to help stabilize and relieve sore or injured thumbs.

Features

- Adjustable metal splint
- Shock absorbing foam at base of thumb for comfortable fit
- Extra-long thumb strap can be fastened around top or along base of thumb for added stability

Support Level: advanced

Retail

Beige 4518 OSFM

sizing: measure around wrist

ONE SIZE	5.5" - 10.5" (13 - 26 cm)
-----------------	---------------------------



DIAMOND PAD ELBOW KNEE SHIN (EKS)

Mueller® Diamond Pad Elbow Knee Shin (EKS) provides protection to the elbow, knee or shins from shocks and bumps during contact sports while providing constant compression and soothing warmth.

Features

- Designed with high impact diamond padding technology
- Lightweight and comfortable fabric is designed to stretch and contour for use as multi-purpose protection
- Provides lightweight padding during activities
- Antimicrobial treatment help control odors*
- Not made with natural rubber latex

Support Level: moderate

*The antimicrobial treatment is intended to protect the brace against odor, staining and deterioration caused by bacteria and microorganisms. This treatment does not extend protection to the skin.

Retail

- Black** 55371 small (pair); 55372 regular (pair); 55373 large (pair); 55374 x-large (pair)
- White** 55471 small (pair); 55472 regular (pair); 55473 large (pair); 55474 x-large (pair)

sizing: measure around center of the elbow, knee or calf

SM	MD	LG	XL
9" - 12"	12" - 15"	15" - 18"	18" - 21"
22.8 - 30.4 cm	30.4 - 38.1 cm	38.1 - 45.7 cm	45.7 - 53.3 cm



CALF/SHIN SPLINT SUPPORT

The Mueller® Calf/Shin Splint Support has a wraparound design for custom fit.

Features

- Firm comfortable compression
- Soft neoprene blend retains body heat to help promote circulation
- Size large features extra-long coverage

Support Level: moderate

Retail

- Black** 330REG regular; 330LG large

sizing: measure around calf

REG	LG
11" - 16"	16" - 20"
27 - 40 cm	40 - 50 cm



CHO PAT® SHIN SPLINT COMPRESSION SLEEVE

Cho Pat® Calf/Shin Splint Compression Sleeve helps relieve pain associated with shin splints.

Features

- Two foam core straps act as shock absorbers to help reduce stress to tendons and soft tissues
- Made with latex free materials

CHO-PAT® is a registered trademark of Cho-Pat Inc., Hainesport, NJ

Retail

- White** 983MD medium; 983 LG large

sizing: measure around calf

MD	LG
11" - 16"	16" - 20"
27 - 40 cm	40 - 50 cm



ARM SLING

Mueller® Arm Sling is designed for comfort.

Features

- Adjustable padded shoulder strap
- Provides general arm support to restrict movement and help assist healing
- Not made with natural rubber latex

Support Level: moderate

Retail

- Blue** 4601 OSFM



QUENCH® GUM TUB-O-QUENCH®

Features

- Approximately 300 assorted pieces of gum per tub
- Four tubs per case
- Assorted gum flavors: Lemon, Fruit Punch, Orange & Grape

Retail

170176 300 assorted pieces of gum/tub



QUENCH® GUM VARIETY BAG

Features

- Variety bags of assorted gum flavors: Lemon, Fruit Punch, Orange & Grape
- 12 – 2.4 oz variety bags per case
- Display tray holds 12 – 2.4 oz bags of gum
- Clip strip holds 36 – 2.4 oz bags of gum (ships with 3 pre-loaded clips strips per case)

Retail

170299 12 – 2.4 oz variety bag
 170190 36 – 2.4 oz variety bag w/three clip strip
 170499A 12-count display (holds 12 – 2.4 oz variety bags; sold by complete unit only)



QUENCH® GUM GRAPE BAG

Features

- Bag of Grape Quench Gum
- 12 – 2.4 oz bag per case

Retail

170699 12 – 2.4 oz grape gum bags



QUENCH® GUM VARIETY BOX SHELF TALKER

Features

- 12 – 4 oz variety boxes
- Sold as complete unit only
- Boxes of assorted gum flavors: Lemon, Fruit Punch, Orange & Grape

Retail

170192 12 - 4 oz variety boxes



QUENCH® GUM SPORTS TEAM BUCKET

Features

- Approximately 200 assorted pieces of gum per sports bucket
- Four buckets per case
- Assorted gum flavors: Lemon, Fruit Punch, Orange & Grape

Retail

170576 200 assorted pieces of gum/bucket



QUENCH® TEAM SPORTS BOTTLE

Features

- Free Premium Quart size sports bottle w/new sure shot cap – \$5 value
- 8 oz of Quench (approx 50 pieces)
- Six bottles of gum per case
- Assorted gum flavors: Lemon, Fruit Punch, Orange & Grape

Retail

919329Q 8 oz, 50 assorted pieces of gum per bottle (approximately)



QUENCH® GUM 10-STICK PACKS

Features

- 12 or 24 10-stick packs of gum per tray
- Choose from four double flavors: Orange Fruit Punch, Strawberry Watermelon, Double Raspberry, & Green Apple Grape
- Twelve trays per case
- Each pack has 10 pieces of gum

Retail

12-count trays	170143-T Orange Fruit Punch 170153-T Strawberry Watermelon 170157-T Double Raspberry 170163-T Green Apple Grape
24-count trays	170145-T Orange Fruit Punch 170155-T Strawberry Watermelon 170159-T Double Raspberry 170167-T Green Apple Grape

QUENCH® GUM 10-STICK PACK SHELF TALKER

Features

- 48 – 10-stick packs of gum per shelf talker
- Sold as complete unit only
- Each pack has 10 pieces of gum
- Choose from four double flavors: Orange Fruit Punch, Strawberry Watermelon, Double Raspberry, & Green Apple Grape
- Also available in an assorted flavor display with one of each flavor

Retail

170144	Orange Fruit Punch
170146	Strawberry Watermelon
170147	Double Raspberry
170148	Assorted Flavors



QUENCH® GUM WATER BOTTLE DISPLAY

Features

- 10-stick pack sidekick countertop display
- Sold pre-filled with 120 – 10-stick packs of gum, or empty shipping with 144 – 10-stick packs of gum in six 24-count trays (36 each flavor)
- Each pack has 10 pieces of gum
- Assorted double flavors: Orange Fruit Punch, Strawberry Watermelon, Double Raspberry & Green Apple Grape

Retail

170466	pre-filled w/120 10-stick packs
170356	empty, ships w/144 10-stick packs



QUENCH® GUM Q1 DISPLAY

Features

- Holds one 12-Count Orange Fruit Punch tray, one 12-Count Strawberry Watermelon tray, two 12-Count Green Apple Grape tray, two 12-Count Double Raspberry trays, two 8-count Quench® X Fruit Xplosion

Retail

180125	Q1 Display (sold empty)
--------	-------------------------



QUENCH® X

Features

- Thirst quenching sugar free gum helps avoid dry mouth
- Infused with sugar free Xylitol
- No aspartame
- 8 supersized pieces per pouch
- The next generation of mouthwatering Quench® Gum

Retail

179147	8-count tray Fruit Xplosion
--------	-----------------------------



20 Foot Display



12 Foot Display



8 Foot Display



4 Foot Display



SPIN RACK DISPLAY

- Two-sided floor standing display
- 180665 display rack only
- 180665B display base only



GRID IRON PYRAMID DISPLAY

- Three-sided floor standing display
- 180260 display rack



FOUR-SIDED GRID IRON DISPLAY

- Four-sided floor standing display
- 180280 display rack



**2-PACK
MTAPE®/MWRAP®
DISPENSER**

- Holds 64 2-packs of MTape®
- Holds 28 2-packs of Mwrap®
- Dimensions approx 13"W x 11"D x 17"H
- 180300 display rack (empty - product sold separately)



**ALEX MORGAN
MWRAP® DISPLAY**

- Holds 32 2-packs of MWrap®
- Dimensions approx 13"W x 7"D x 33"H
- 180011 MWrap® Team Color display
- 180097 MWrap® Pink display



KINESIOLOGY PILLAR DISPLAY

- Dimensions approx 14" x 4"
- 190091 display rack (includes header and side panels)
- HS190091 Header Sign 12" x 13"
- 190092 Side Panel 1 4" x 47"
- 190093 Side Panel 2 4" x 47"

KINESIOLOGY TAPE P.O.P



HS180127 - 4 Foot Display Header 4' x 10"



HS180117 - Spin Rack Header 16" x 8.5"

180147/180157 - Aisle Invader 24" x 6"



SOLD OUT REORDER CARDS

MUELLER BRANDED P.O.P



HS 789 - Side Two - 4 Foot Display Header 4' x 10"



HS 961 - 2 Foot Display Header 2' x 10"



HS 816 - Spin Rack Header 16" x 8"

OTHER SPORT CARE® P.O.P



HS180607A - 2 Foot Display Header 2' x 10"



HS 180097 Alex Morgan MWrap® Header Spin Rack Header 16" x 8.5"

A

Adhesive Mesh 27

Adjust-To-Fit® Ankle Brace 44

Adjustable Ankle Stabilizer 45

Adjustable Ankle Support 45

Adjustable Back & Abdominal Support 74

Adjustable Back Brace 73

Adjustable Elbow Support 62

Adjustable Knee Support 56

Aircast® Sport Ankle Brace 48

Aircast® Tennis Elbow Support 65

Alcohol Rub 32

Ankle Braces & Supports 42-48

Ankle Support with Straps 46

Arch Support 79

Arm Sling 81

ATF®2 Ankle Brace 43

Athlete Protection 36-41

Athletic Care Athletic Trainers' Tape 6

Athletic Care Porous Tape 6

Athletic Chalk 30

Athletic Supporter 38

Athletic Trainer Kits 15-21

B

B Sharp™ 32

Back Braces & Supports 72-74

Back Support w/Suspenders 73

Ball Cleaner 32

Bandage Scissors 13

Bandage Shears 13

Batters' Bags 29

Beaded Hot/Cold Pack 22

Blister Kit 27

Blister Pads 26

C

Calf/Shin Splint Support 81

Cho Pat® Achilles Tendon Strap 79

Cho Pat® Dual Action Knee Strap 61

Cho Pat® Knee Strap 61

Cho Pat® Shin Splint Compression Sleeve 81

Clear Zipper Bag 21

Coconut Oil 31

Cohesive Spatting Tape™ 8

Cold/Hot Pack, Reusable 22

Cold/Hot Therapy 22-24

Cold/Hot Therapy Wrap 23

Compression Gloves 80

Coolant Cold Spray 23

Cotton Nasal Plugs 28

Cotton Tipped Applicators 29

D

Dermal Pads 26

Diamond Pad 3 Pad Shirt 36

Diamond Pad 5 Pad Short 36

Diamond Pad Elbow Knee Shin (EKS) 58, 66, 81

Diamond Pad Elbow Sleeve 66

Diamond Pad Volleyball Knee Pads 58

Disposable Bags 23

E

EasyFit® Kinesiology Tape 12

Economy Tape Cutter 13

Elastic Ankle Support 47

Elastic Bandage 11

Elastic Cold/Hot Wrap 23

Elastic Elbow Support 63

Elastic Knee Brace 54

Elastic Knee Stabilizer 55

Elastic Knee Support 57

Elastic Wrist Support w/Loop 71

Elbow Braces & Supports 62-67

Elbow Pads 67

Elbow Sleeve 64

Elbow Support 62

Emergency Shears 13

Euro Grip Tape 7

EZ-Cleans Plus Kit 34

EZ-Wrap™ Plastic Wrap 23

F

Fanny Pack 21

Felt 26

First Aid League Kit 20

First Aid Sport Kit 21

Flex Shield® Flexible Protective Cup 37

Flex Shield® w/Support Shorts 37

Flex Shield® w/Supporter 38

Flexible Cold/Hot Therapy Pads 22

Flexlight™ Tape 5

Foam Rubber 26

Foot Powder 30

G

Gauze Pads 28

Gel Brace, Cold Therapy 24, 48

Germa Spray™ Plus 33

Glove Oil Liquid 32

Gloves and Dispenser 28

Golfer's Tape 7

Graduated Compression 76-78

Grip Tape 7

H

Heel & Lace Pads 26

Heel Cups 80

Heel Support 79

Hg80® Ankle Support 47

Hg80® Elbow Support 63

Hg80® Hinged Knee Brace 49

Hg80® Knee Brace 53

Hg80® Knee Support 55

Hg80® Premium Hard Shell Ankle Brace 48

Hg80® Premium Hinged Knee Brace 49

Hg80® Premium Knee Brace 52

Hg80® Premium Knee Stabilizer 52

Hg80® Premium Soft Ankle Brace with Straps 42

Hg80® Premium Tennis Elbow Brace 65

Hg80® Premium Wrist Brace 68

Hg80® Wrist Brace 69

Hg80® Wrist Support 71

Hinged Knee Brace 50

Hinged Wraparound Knee Brace 51

Hot Stuff® Cream 31

I

Ice Bag Wrap 23

Ice Bags, Single Use 22

Instant Cold Packs 22

Instant Hand Sanitizer 33

ITB Strap 60

J

Jumper's Knee Strap 60

K

Kinesiology Scissors 13

Kinesiology Tape® 12

Knee Braces & Supports 49-61

Knee Sleeve Closed Patella 57

Knee Sleeve Open Patella 57

Knee Stabilizer Open Patella 54

Knee Support Closed Patella 56

Knee Support Open Patella 56

L

Life Care® Ankle Support 47

Life Care® Elbow Support 63

Life Care® Knee Support 55

Life Care® Wrist Support 71

Lip & Mouthguard.....	40
Lite™ Ankle Brace.....	48
Lube Stick™ for Runners.....	30
Lubricating Ointment.....	30
Lumbar Back Brace w/Removable Pad.....	72

M

M Cutter™.....	13
M Strips® Adhesive Bandages.....	28
M Tac™.....	14
Magic Grip®.....	29
Massage Lotion.....	31
Max Knee Strap.....	60
Medi Kit™ Fill Pack Module.....	19
Medi Kit™ MULE.....	18
Medi Kit™ Omni.....	18
Medi Kit™ Pro Sport Backpack.....	19
Medi Kit™ Trekker MAX.....	20
Merchandising.....	84-85
MLastic® Tape.....	8
More Skin™.....	26
Mouthguards.....	39-40
MTape®.....	4
Mueller Collar™.....	41
Mueller Green Adjustable Ankle Support.....	45
Mueller Green Adjustable Back & Abdominal Support.....	74
Mueller Green Adjustable Hinged Knee Brace.....	51
Mueller Green Fitted Wrist Brace.....	68
Mueller Hero™ Athletic Training Kits & Accessories.....	15-17
Mueller Kold® Towel.....	24
Mueller Matrix™ Mouthguards.....	39
Mueller Meret™ Athletic Trainer Kits.....	18-19
Muellergesic® Cream.....	31
Muellerguard™.....	40
Muellerhinge™ 2100 Knee Brace.....	51
MuellerKold® Instant Cold Pack.....	22
Multi Purpose Back Brace.....	72
Multi-Sport Knee Pads.....	59
MWrap®.....	10

N

Nasal Sponges.....	28
Neoprene Ankle Support.....	46
Neoprene Wrist Sleeve.....	70
No Glare® Glare-Reducing Stick.....	25
No Glare® Glare-Reducing Strips.....	25
No Glare® Glare-Reducing Strips, Assorted Shapes.....	25
No Glare® Premium Glare-Reducing Strips.....	25
No Glare® Stealth® Glare-Reducing Strips.....	25
Nose Guard.....	41
Nuttin' But Nut.....	31

P

Padded Elbow Sleeve.....	67
Patella Stabilizer Knee Brace.....	53
Perform Plus™ Tape.....	4
Performance Sleeve.....	64
Perform™ Tape.....	4
Petroleum Jelly.....	31
PFTape® System for Plantar Fasciitis.....	13
Pine Tar.....	32
Plantar Fasciitis Tape.....	13
Pro Level™ Elbow Pad with Kevlar.....	66
Pro Level™ Hinged Knee Brace Deluxe.....	50
Pro Level™ Knee Pad with Kevlar.....	59
Professional Elbow Sleeve.....	64
ProStrips®.....	27
PTape™.....	7

Q

Quart Water Bottle.....	35
Quench.....	82-83
Quick Drying Adherent Spray.....	14

R

Refill Kit for Athletic Trainers' Kits.....	19
---	----

Reusable Ice Bag.....	22
Rosin Bags.....	30
Rosin Blend.....	30

S

Sani-Cloth® Plus.....	33
Self Adjusting Knee Stabilizer.....	53
Shokk™ Elbow Pad.....	67
Shokk™ Knee Pad.....	60
Shoulder Brace.....	78
Shoulder Support.....	78
Shower Soap.....	33
Sling Bag.....	20
Soft Ankle Brace with Straps.....	43
Soft Support Wrap.....	9
Spatting Tape™.....	5
Specialty Products.....	75-81
Spill Kit.....	34
Sport Tape.....	7
Sports Accessories.....	25-35
Sports Balm™.....	31
Sports Wrap™.....	9
Stick-On Padding Kit.....	27
Stickum Grip™ Powder.....	29
Stickum Spray™.....	29
Stickum™ Paste.....	29
Strappguard™.....	39
Stretch MTape® Premium.....	6
Styling Wrap.....	10
Suds™ Foam Soap.....	33
Super Suds™.....	33
Support Shorts.....	38

T

Tape & Tuffner® Remover.....	14
Tape Kit.....	11
Tape Roll Holder.....	16, 21
Tape Tote™.....	14
Tapes, Wraps & Taping Supplies.....	4-14
TapeWrap® Premium.....	8
Taping Kit.....	11
Tear Tape™.....	5
Tear-Light Tape®.....	5
Tennis Elbow Support.....	65
The ONE® Ankle Brace.....	42
Thigh Sleeve.....	79
Thigh Support.....	79
Thumb Stabilizer.....	80
Tongue Depressors.....	28
Tuffner® Pre-Tape Spray.....	14
Turf Sleeve.....	64

V

Vitamin C.....	32
Volleyball Knee Pads.....	59

W

Waist Support.....	74
Water Bottles & Carriers.....	35
Water Boy.....	34
Whizzer® Cleaner & Disinfectant.....	34
Wonder Wrap™.....	11
Wraparound Ankle Support.....	46
Wraparound Knee Brace Deluxe.....	54
Wrist Brace.....	70
Wrist Brace w/ Splint.....	69
Wrist Braces & Supports.....	68-71
Wrist Stabilizer.....	69
Wrist Support Wrap.....	70

X

XLP Ankle Brace.....	44
----------------------	----

Y

Youth Mouthguards.....	40
------------------------	----

TABILIZER
STAY IN THE GAME
UNSTOPPABLE
UNSTORMANCE
PERFORMANCE
PROTECTION
PERFORMANCE
THERAPY
SUCCESS
FITNESS
ACTIVE
WELLNESS
ENERGY
SUPPORT
MOTIVATION
WE
SPORT
MED

MUELLER[®]



MUELLER[®]

SPORT CARE[®]

Mueller Sports Medicine, Inc. One Quench Drive, PO Box 99, Prairie du Sac, WI 53578 USA • 1-800-356-9522 • 608-642-8530
ORDER FAX 1-800-852-4334 • FAX 608-643-2568 • sportcare@muellersportsmed.com
muellersportsmed.com